

# **STRATEGIE PER UNA DIDATTICA INCLUSIVA**

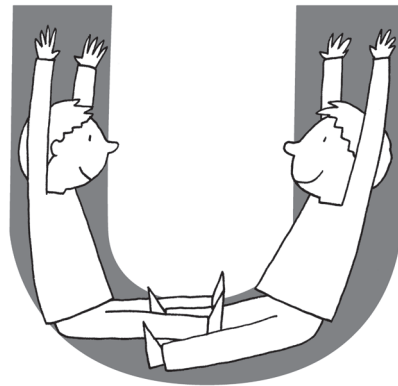
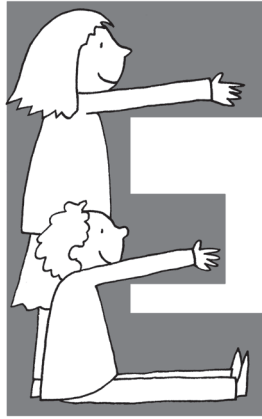
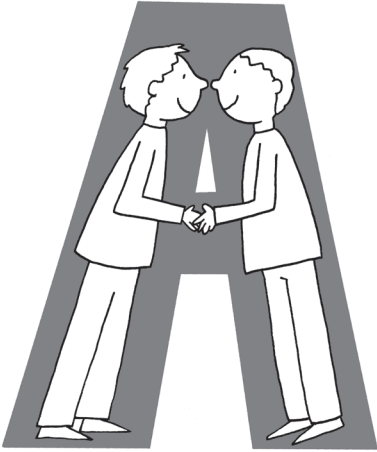
## **ITALIANO E MATEMATICA**

### **LIVELLO BASE**

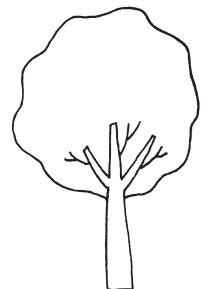
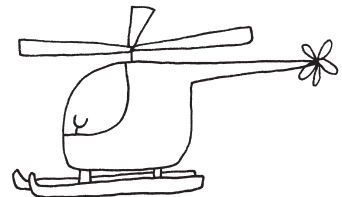
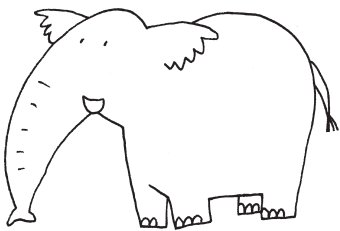
## DI VOCALE IN VOCALE



PERCORRI CON UN DITO IL CONTORNO DI CIASCUNA VOCALE E PRONUNCIANE IL SUONO.



PRONUNCIA IL NOME DI CIASCUNA FIGURA E COLLEGALA CON UNA FRECCIA ALLA SUA VOCALE INIZIALE.



## VOCALI AMICHE

IN OGNI RIQUADRO CERCHIA LE LETTERE UGUALI.

|   |   |   |   |
|---|---|---|---|
| O | D | A | P |
| T | M | O | Z |
| R | O | S | O |
| N | B | O | E |

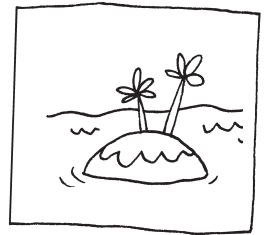
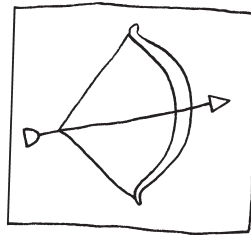
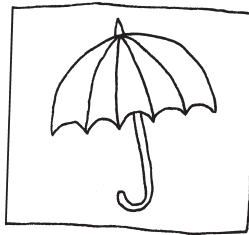
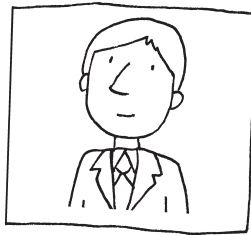
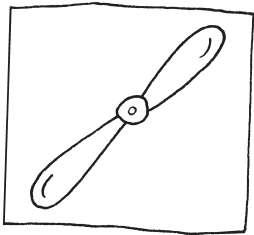
|   |   |   |   |
|---|---|---|---|
| I | L | M | A |
| P | A | S | E |
| A | O | A | T |
| V | A | C | F |

|   |   |   |   |
|---|---|---|---|
| L | I | O | A |
| I | E | I | M |
| H | S | U | I |
| N | I | P | G |

SCRIVI NEI QUADRATINI LE LETTERE CHE HAI CERCHIATO IN OGNI RIQUADRO SOPRA.

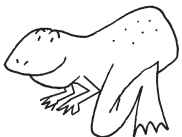



SOTTO A CIASCUN CARTELLINO SCRIVI LA VOCALE INIZIALE.



|  |  |  |  |  |  |  |  |  |  |  |  |  |  |  |  |  |  |  |  |  |
|--|--|--|--|--|--|--|--|--|--|--|--|--|--|--|--|--|--|--|--|--|
|  |  |  |  |  |  |  |  |  |  |  |  |  |  |  |  |  |  |  |  |  |
|--|--|--|--|--|--|--|--|--|--|--|--|--|--|--|--|--|--|--|--|--|

PRONUNCIA IL NOME E COMPLETA CON LE VOCALI.



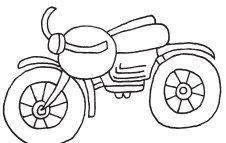
R \_ N \_



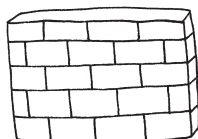
M \_ L \_



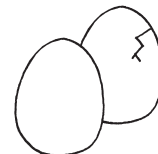
N \_ D \_



M \_ T \_



M \_ R \_



\_ OV \_

## GIOCARE CON I SIMBOLI

 NELLE PAROLE DATE LE VOCALI SONO STATE SOSTITuite DA SIMBOLI. COMPLETA LE PAROLE. ATTENTO AI SIMBOLI!

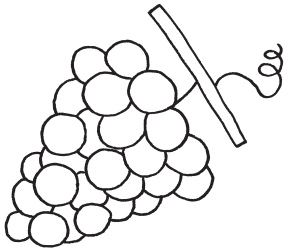
A =

E =

I = ✕

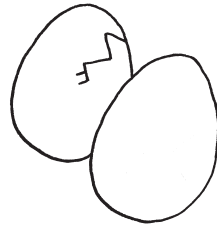
O =

U = ○



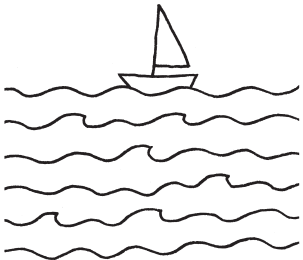
○ v

.....



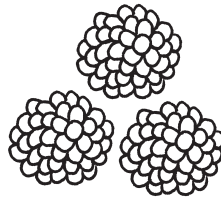
○  v

.....



M  R

.....



M  R

.....



N ✕ D

.....



N  D

.....



N  S

.....



V  S

.....



## LETTERE GEMELLE

 UNISCI CON UNA FRECCIA LE LETTERE UGUALI. OSSERVA L'ESEMPIO.



MARE



MORE



NIDO



NODO



LUNA



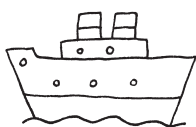
SOLE



LANA



SALE



NAVE



PIPE



NEVE



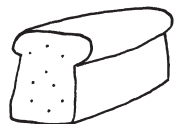
PEPE



CANE



LAGO



PANE



MAGO



NASO



PERA



VASO

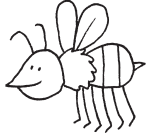


SERA

## CHE C'È DI NUOVO?



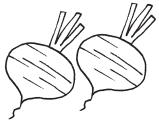
OSSERVA LE COPPIE DI PAROLE: UNA È PIÙ LUNGA.  
COLORA DI ARANCIONE LA LETTERA IN PIÙ.



APE



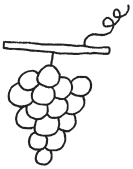
AMO



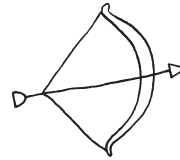
RAPE



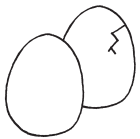
RAMO



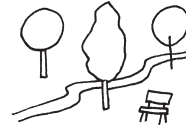
UVA



ARCO



UOVA



PARCO



UOMO



PIO



DUOMO



PINO



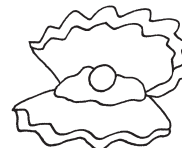
ASSO



PERA



SASSO



PERLA



MELE



PALA



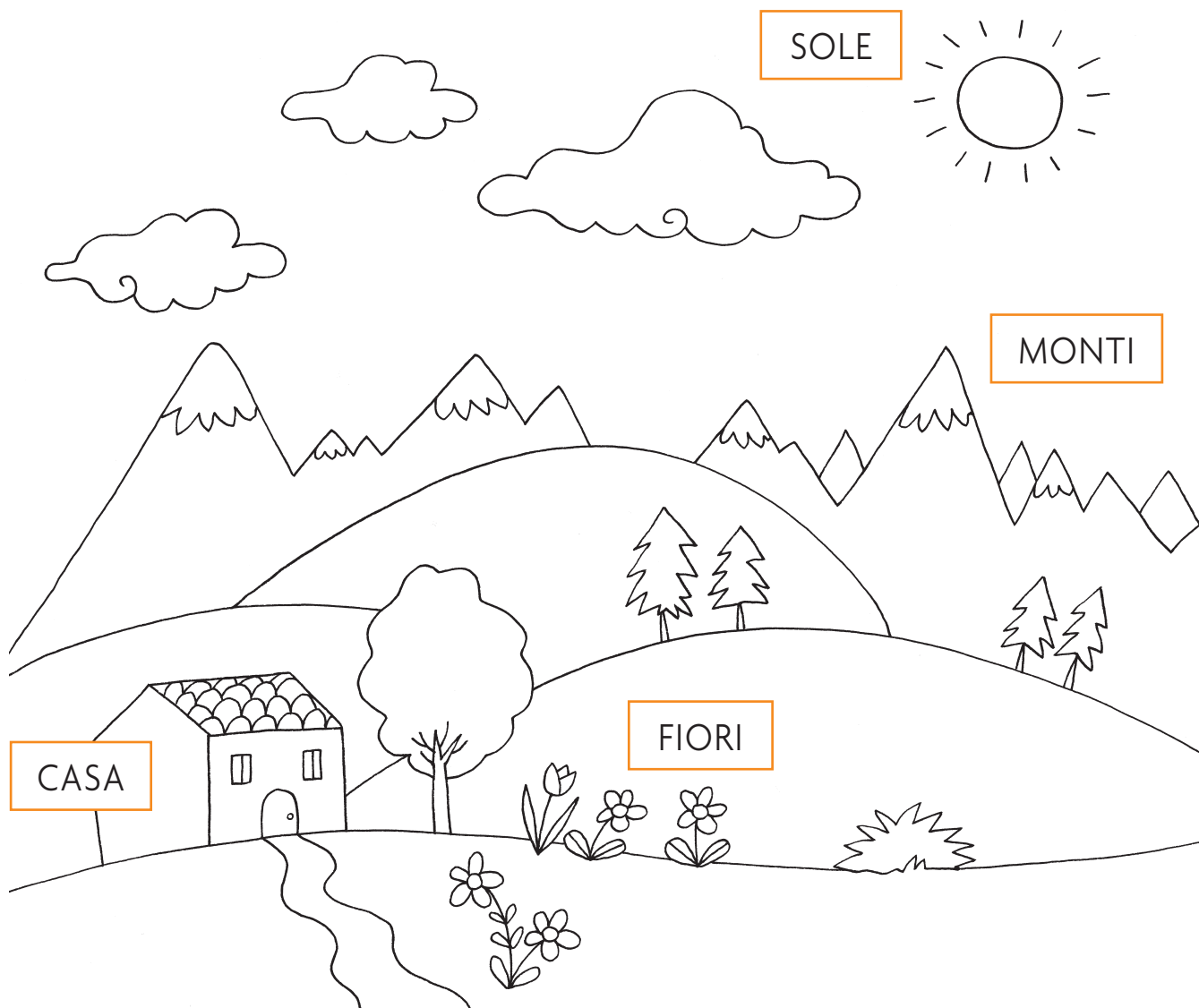
MIELE



PALLA

## PAROLE CON I BUCHI

 OSSERVA IL DISEGNO E I CARTELLINI CON LE PAROLE.  
POI COMPLETA LE PAROLE CON LE LETTERE CHE MANCANO.



F \_ ORI

CA \_ A

M \_ NTI

S \_ L \_

\_ IORI

\_ ASA

\_ ONT \_

\_ OLE

\_ IOR \_

\_ AS \_

MO \_ TI

SOL \_

FI \_ \_ I

C \_ \_ A

MON \_ \_

S \_ \_ E

## LETTERE PER... UNA PAROLA



OSSERVA IL DISEGNO E LA PAROLA SCRITTA NEL CARTELLINO. POI SCOPRI LA PAROLA CORRETTA TRA QUELLE DATE E COLORALA.



ULNA

LAUN

LUNA

NULA

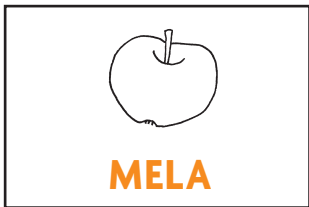


APER

RAPE

PAER

PERA



MAEL

MELA

AMEL

MALE

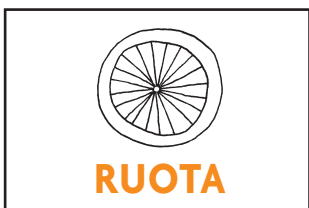


PLALA

PALAL

PALLA

ALLAP

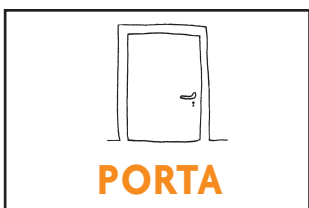


RUTOA

ROTAU

ROAUT

RUOTA



PORAT

POTAR

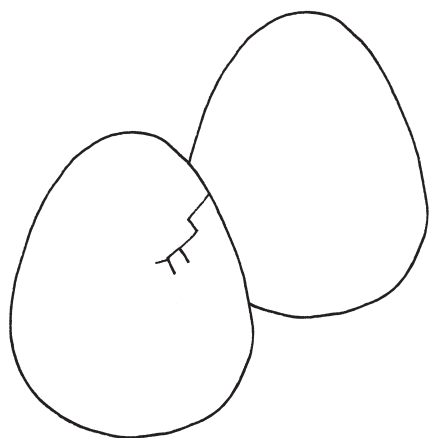
PORTA

POART

## PAROLE NASCOSTE



COLORA DI GIALLO LE CASELLE IN ORIZZONTALE E IN VERTICALE CHE PRESENTANO LA PAROLA **UOVA** NELLA CORRETTA SUCCESSIONE DELLE LETTERE.

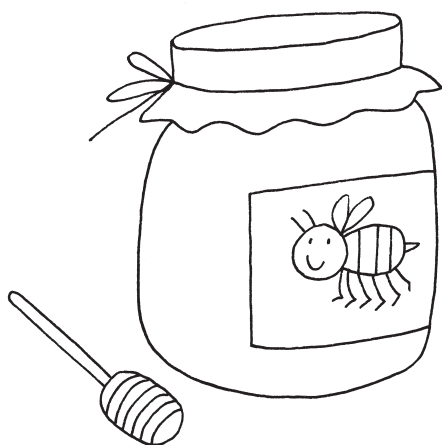


**UOVA**

|   |   |   |   |   |   |   |   |
|---|---|---|---|---|---|---|---|
| Z | U | O | V | A | T | L | U |
| B | A | H | S | R | P | Q | O |
| U | O | V | A | Z | U | A | V |
| O | T | R | S | U | O | V | A |
| V | D | Z | B | F | V | P | Q |
| A | N | G | C | M | A | Z | S |



COLORA DI GIALLO LE CASELLE IN ORIZZONTALE E IN VERTICALE CHE PRESENTANO LA PAROLA **MIELE** NELLA CORRETTA SUCCESSIONE DELLE LETTERE.



**MIELE**

|   |   |   |   |   |   |   |   |
|---|---|---|---|---|---|---|---|
| A | L | M | I | E | L | E | B |
| M | R | I | M | Z | O | Q | M |
| I | S | E | G | I | H | F | I |
| E | D | L | B | U | O | A | E |
| L | T | E | Z | H | N | L | L |
| E | V | H | M | I | E | L | E |

## PAROLE A CONFRONTO

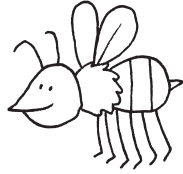


PRONUNCIA LA PAROLA E METTI IN RELAZIONE LE LETTERE CHE HANNO LO STESSO SUONO. OSSERVA L'ESEMPIO.



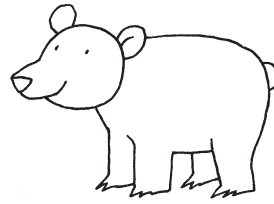
UOMO

u  
o  
m  
o



APE

a  
p  
e



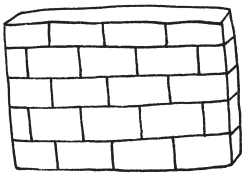
ORSO

o  
r  
s  
o



INDIANO

i  
n  
d  
i  
a  
n  
o



MURO

m  
u  
r  
o



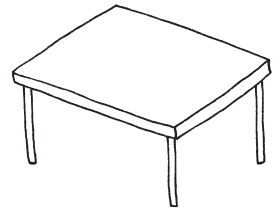
DUOMO

d  
u  
o  
m  
o



FIORE

f  
i  
o  
r  
e

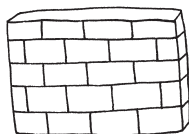
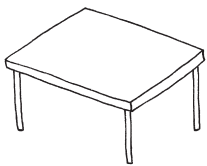


TAVOLO

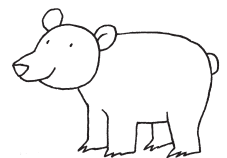
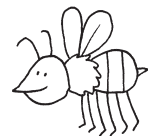
t  
a  
v  
o  
l  
o



COLLEGA OGNI FIGURA CON LA PAROLA GIUSTA.



muro  
fiore  
orso  
duomo  
tavolo  
ape  
uomo  
indiano



## LETTERE UGUALI E... LETTERE DIVERSE



CERCHIA CON LO STESSO COLORE LE LETTERE UGUALI.

|   |   |   |   |   |   |
|---|---|---|---|---|---|
| p | v | b | u | q | d |
| b | u | q | p | q | b |
| q | n | d | q | d | u |



A COPPIE, LE PAROLE HANNO UNA LETTERA DIVERSA. EVIDENZIALA CON IL COLORE GIALLO.

mano  
nano

fumi  
lumi

rana  
tana

topo  
dopo

due  
bue

more  
mare

lama  
lana

vaso  
viso

nudi  
nubi

collo  
colla

nave  
nane

banca  
panca

cane  
tane

cena  
vena

sale  
sole

mele  
vele

pere  
sere

moto  
noto

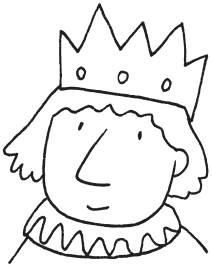
caro  
coro

lune  
fune

## PEZZI UGUALI

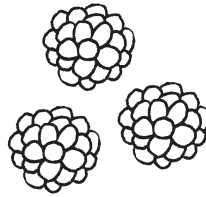


LEGGI LE PAROLE E CERCHIA I "PEZZI" UGUALI. OSSERVA L'ESEMPIO.



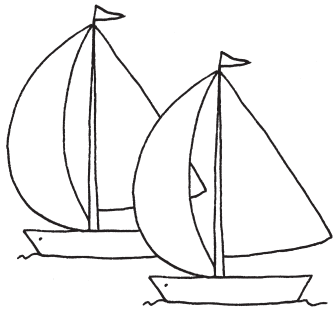
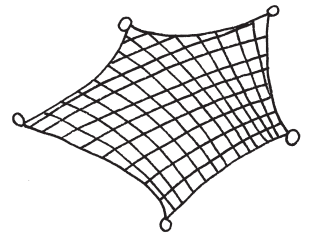
RE

re



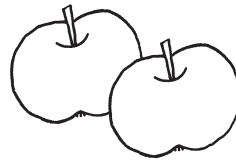
mo re

re te



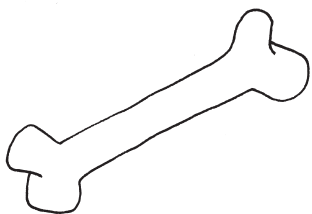
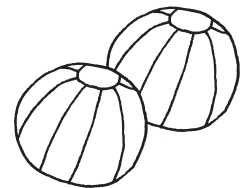
VE LE

ve le



me le

pal le



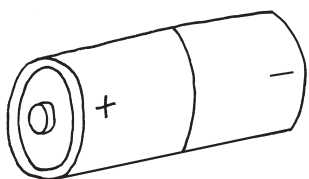
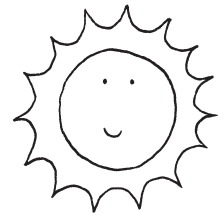
OS SO

os so



vi so

so le



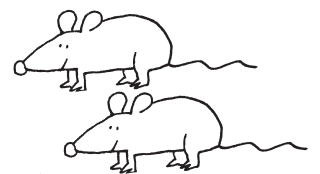
PI LA

pi la



pi pa

to pi







## CAMBIO DI POSTO




OSSERVA I DISEGNI E PRONUNCIA I NOMI. POI COMPLETA IL CAMBIO DI POSTO DEI PEZZI UGUALI.



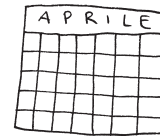

|    |    |
|----|----|
| ni | do |
| do |    |




|    |    |
|----|----|
| do | no |
|    | do |




|    |    |
|----|----|
| se | me |
| me |    |

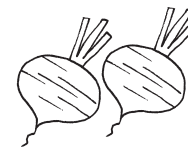
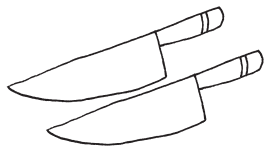

|    |    |
|----|----|
| me | la |
|    |    |



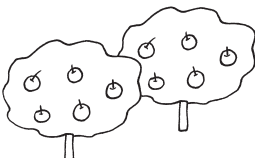
|    |    |
|----|----|
| ra | mo |
|    |    |




|    |    |
|----|----|
| pe | ra |
|    |    |

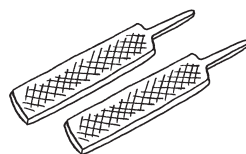
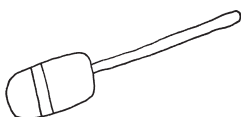
|    |    |
|----|----|
| mo | re |
|    |    |



|    |    |
|----|----|
| me | li |
|    |    |



|    |    |
|----|----|
| la | go |
|    |    |



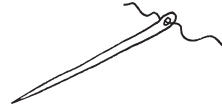
## LA PAROLA CRESCE



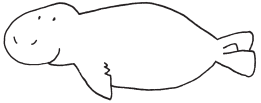
OSSERVA I DISEGNI, PRONUNCIA I NOMI E CERCHIA LA LETTERA IN PIÙ.



oca



ago



foca



lago



amo



re



ramo



tre



sole



asso



isole



sasso



COLLEGA I CARTELLINI CHE CONTENGONO LE PAROLE UGUALI.

SOLE

RAMO

FOCA

LAGO

foca

lago

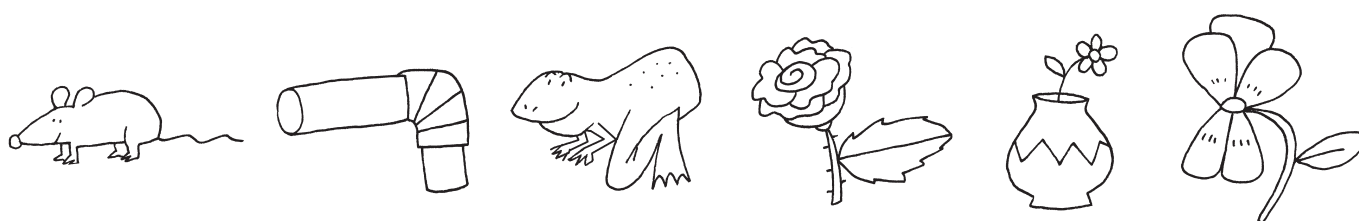
sole

ramo

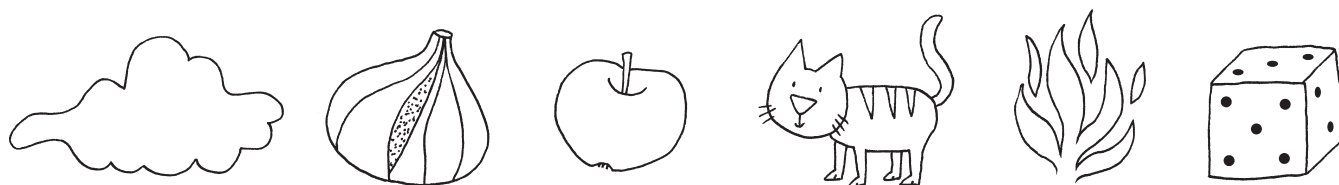
## QUAL È L'INIZIO?

 OSSERVA I DISEGNI E PRONUNCIA I NOMI. POI COLLEGA IL "PEZZO" INIZIALE DELLA PAROLA CON IL DISEGNO CORRETTO.

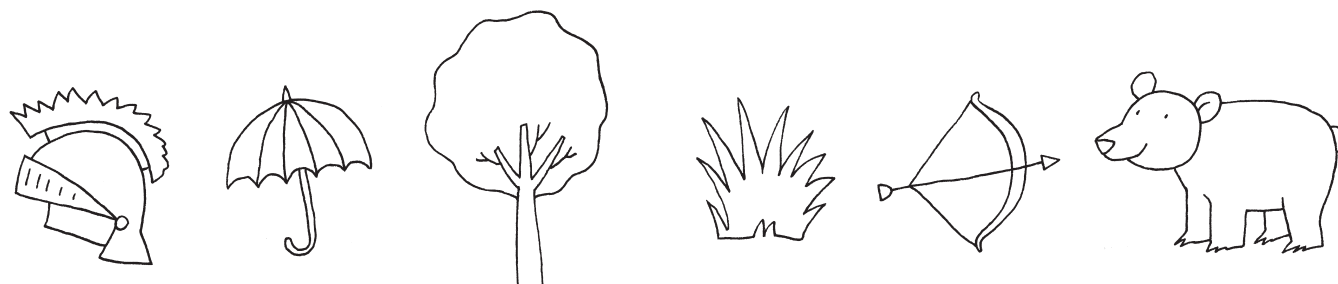
|          |          |          |          |          |          |
|----------|----------|----------|----------|----------|----------|
| TU<br>tu | RA<br>ra | VI<br>vi | RO<br>ro | VA<br>va | TO<br>to |
|----------|----------|----------|----------|----------|----------|



|          |          |          |          |          |          |
|----------|----------|----------|----------|----------|----------|
| ME<br>me | GA<br>ga | FU<br>fu | DA<br>da | FI<br>fi | NU<br>nu |
|----------|----------|----------|----------|----------|----------|

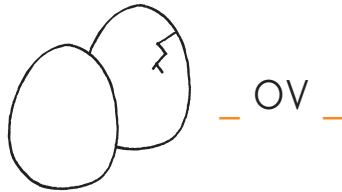


|          |          |          |          |          |          |
|----------|----------|----------|----------|----------|----------|
| AL<br>al | OR<br>or | AR<br>ar | OM<br>om | EL<br>el | ER<br>er |
|----------|----------|----------|----------|----------|----------|



## PENSANDO ALLE VOCALI

 PRONUNCIA IL NOME E COMPLETA CON LA VOCALE INIZIALE E CON QUELLA FINALE.



 PRONUNCIA IL NOME E COMPLETA CON LE DUE VOCALI CHE MANCANO.



 PRONUNCIA IL NOME E COMPLETA CON LE CINQUE VOCALI:  
**A - E - I - O - U.**



 LEGGI.

IO - AI - OI - EI - AO - AIA - EIA - OIO

io - ai - oi - ei - ao - aia - eia - oio

IL SUONO "S"

PRONUNCIA IL NOME E COMPLETA CON I CARTELLINI DATI.

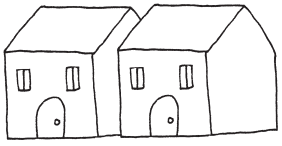
SA

SE

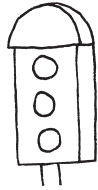
SI

SO

SU



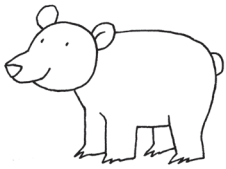
CA \_ \_



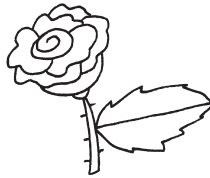
\_ \_ MAFORO



VA \_ \_



OR \_ \_



RO \_ \_

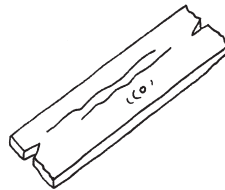


\_ \_ GO

PRONUNCIA IL NOME E COMPLETA CON **AS**, **ES**, **OS**.



\_ \_ SO



\_ \_ SE



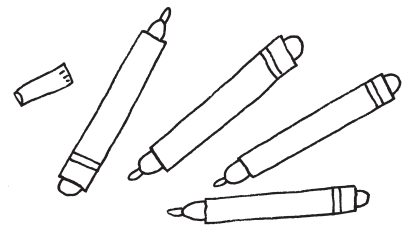
\_ \_ SE

LEGGI PAROLE E IMMAGINI.

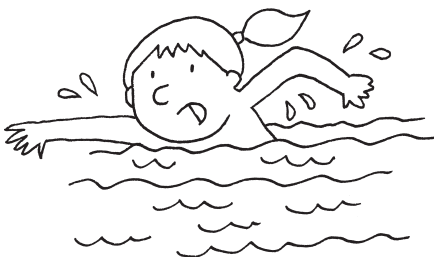
IO **SO**



IO **USO** I



**SA SA**



**SUSI SA**



## IL SUONO "M"

 PRONUNCIA IL NOME E COMPLETA CON I CARTELLINI DATI.

MA

ME

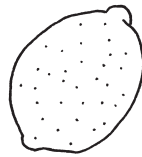
MI

MO

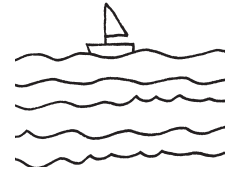
MU



MI \_ \_ SA



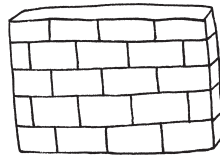
LI \_ \_ NE



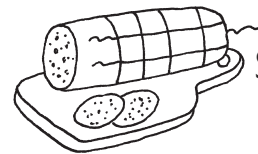
\_ \_ RE



\_ \_ LA



\_ \_ RO

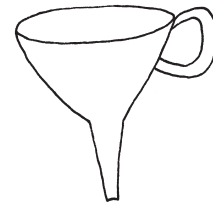


SALA \_ \_

 PRONUNCIA IL NOME E COMPLETA CON **AM**, **IM**, **OM**.



\_ \_ BRELLO



\_ \_ BUTO



\_ \_ BULANZA

 LEGGI.

MIO – AMO – MIAO – MOMO – MIMO – MAMMA

MUMMIA – MAMMA MIA!

IO, MIMO, MEO E MOMO



I SUONI "N" E "L"

 PRONUNCIA IL NOME E COMPLETA CON I CARTELLINI DATI.

NA

NE

NI

NO

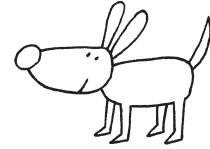
NU



MA \_ \_



\_ \_ SO



CA \_ \_



LU \_ \_



\_ \_ DO



\_ \_ VOLA

 LEGGI.

NOI – NEI – NANO – NON – NANI – NINA – NONNO

 PRONUNCIA IL NOME E COMPLETA CON I CARTELLINI DATI.

LA

LE

LI

LO

LU



\_ \_ PRE



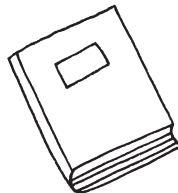
ME \_ \_ NE



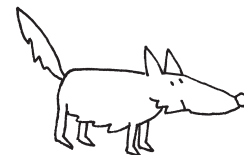
\_ \_ NA



\_ \_ TTE



\_ \_ BRO



\_ \_ PO

 LEGGI.

AL – LE – LIA – ELIA – LEA – LEO – ALA – OLÈ – ALI – OLIO

## I SUONI "P" E "T"

 PRONUNCIA IL NOME E COMPLETA CON I CARTELLINI DATI.

PA

PE

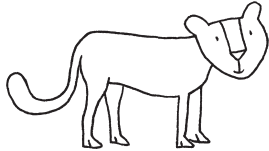
PI

PO

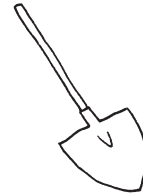
PU



--- PA



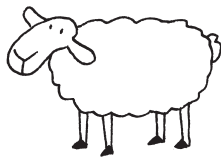
--- MA



--- LA



TO ---



--- CORA



--- MODORO

 LEGGI.

POI – PIO – PAPA – PAPÀ – OP OP – PUPA – UPUPA

PAPPA – APE – API – PIPA – PEPE

 PRONUNCIA IL NOME E COMPLETA CON I CARTELLINI DATI.

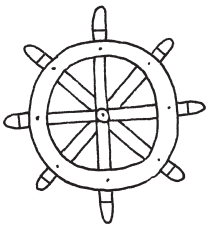
TA

TE

TI

TO

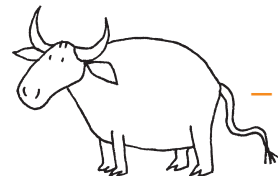
TU



--- MONE



--- NA



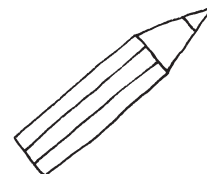
--- RO



--- LEFONO



--- TA



MA --- TA

 LEGGI.

TEO – TUO – TUTA – TUA – TATA – TEA – TETTO – TUTTO

ATTO – OTTO – ETTO



## I SUONI "D" E "R"

 PRONUNCIA IL NOME E COMPLETA CON I CARTELLINI DATI.

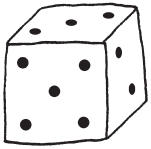
DA

DE

DI

DO

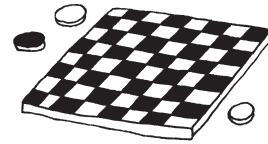
DU



\_\_\_ DO



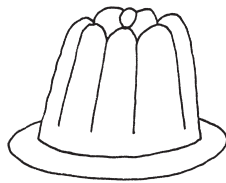
ME \_\_\_ SA



\_\_\_ MA



\_\_\_ E



BU \_\_\_ NO



CAN \_\_\_ LA

 LEGGI.

DAI – IDA – DEA – DODO – DADO – EDO – DADA

ADA – ODIO – ADDIO – IDEA

 PRONUNCIA IL NOME E COMPLETA CON I CARTELLINI DATI.

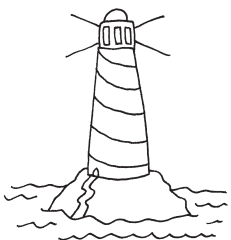
RA

RE

RI

RO

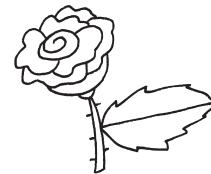
RU



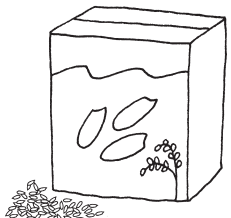
FA \_\_\_



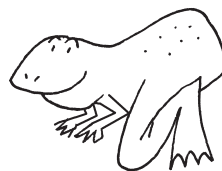
\_\_\_ SPA



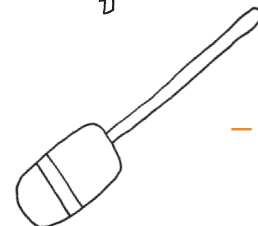
\_\_\_ SA



\_\_\_ SO



\_\_\_ NA



\_\_\_ MO

 LEGGI.

RIO – ORO – ORA – ARA – ERA – ERRE – REO – IRA – RARA

## IL SUONO "B"

 PRONUNCIA IL NOME E COMPLETA CON I CARTELLINI DATI.

**BA**

**BE**

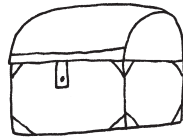
**BI**

**BO**

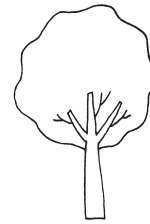
**BU**



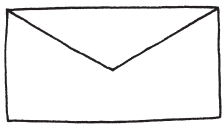
\_\_\_ CI



\_\_\_ ULE



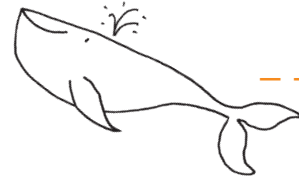
AL \_\_\_ RO



\_\_\_ STA



\_\_\_ FANA



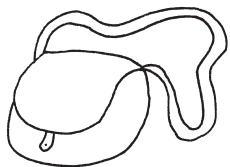
\_\_\_ LENA

 LEGGI.

BEA – BOA – BAU – BUA – BEBÈ – BIBA – BIBO

BOBO – BOB – BABBO – BIO – EBE

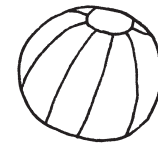
 PRONUNCIA IL NOME E COMPLETA CON **P** O CON **B**.



\_\_\_ ORSA



\_\_\_ OSCO



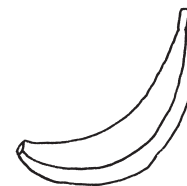
\_\_\_ ALLA



\_\_\_ ALMA

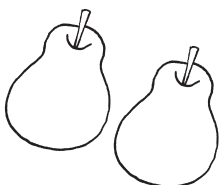


\_\_\_ IBITA



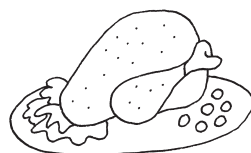
\_\_\_ ANANA

 CAMBIA LA LETTERA **P** IN **B**, SCRIVI E LEGGI.



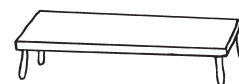
**P**ERE

.....



**P**OLLO

.....



**P**ANCA

.....

I SUONI "F" E "V"

 PRONUNCIA IL NOME E COMPLETA CON I CARTELLINI DATI.

FA

FE

FI

FO

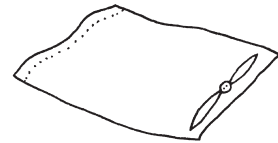
FU



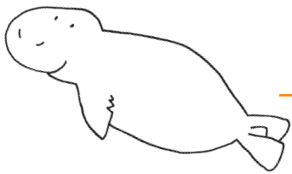
--- OCO



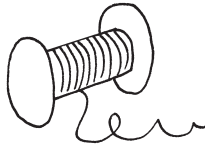
--- TA



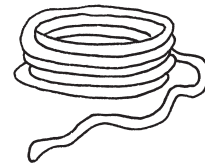
--- DERA



--- CA



--- LO



--- NE

 PRONUNCIA IL NOME E COMPLETA CON I CARTELLINI DATI.

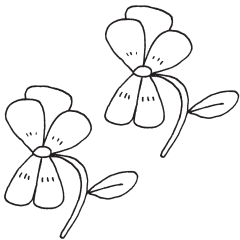
VA

VE

VI

VO

VU



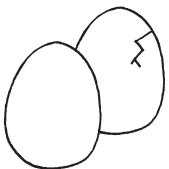
--- OLE

AEIOU  
OU

--- CALI



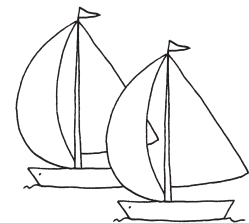
--- TE



UO ---

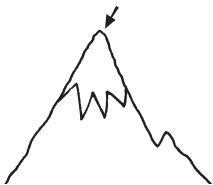


--- LCANO



--- LE

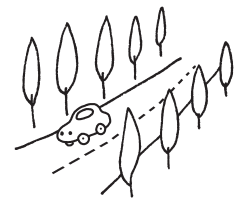
 PRONUNCIA IL NOME E COMPLETA CON **F** O CON **V**.



--- ETTA  
--- ETTA



--- IALE  
--- IALE



 LEGGI.

FAI – UFO – FAO – FIFA – FUI – AFA – UFFA

IVO – EVA – VOI – VAI – UVA – VIVA – EVVIVA – AVVIO – OVVIO

## IL SUONO "Z"

 PRONUNCIA IL NOME E COMPLETA CON I CARTELLINI DATI.

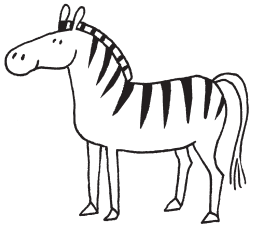
**ZA**

**ZE**

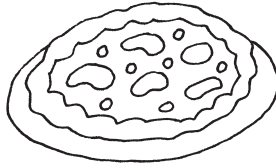
**ZI**

**ZO**

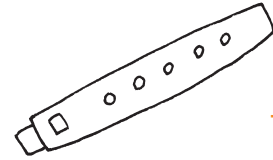
**ZU**



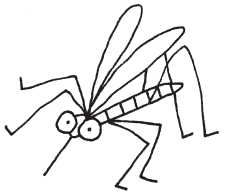
\_\_ BRA



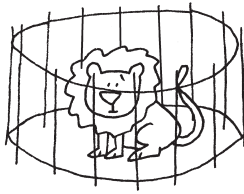
PIZ \_\_



\_\_ FOLO



\_\_ NZARA



\_\_ O



CAL \_\_

 COMPLETA LE PAROLE CON LE VOCALI SCRITTE NEI RIQUADRI, POI LEGGI.

**U - I - A**

**E - I - O**

**M - T - R**

P \_ ZZO

P \_ ZZA

\_ AZZA

P \_ ZZO

P \_ ZZA

\_ AZZA

P \_ ZZO

P \_ ZZA

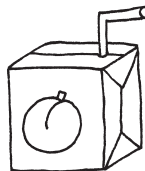
\_ AZZA

 **S O Z?** OSSERVA IL DISEGNO, PRONUNCIA LA PAROLA E CERCHIA QUELLA CORRETTA.



SAZZO

SASSO



ZUCCO

SUCCO



RASSO

RAZZO



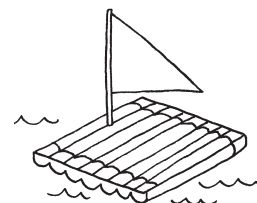
TAZZA

TASSA



STRUSSO

STRUZZO

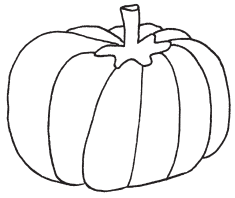


ZATTERA

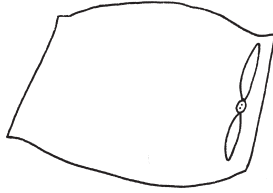
SATTERA

## UNA LETTERA, DUE VOCI

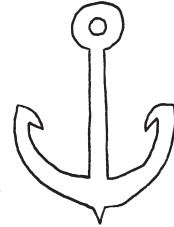
 PRONUNCIA IL NOME E COMPLETA CON **CA, CO, CU**.



ZUC \_ \_

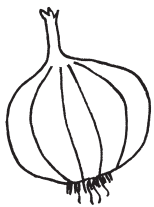


\_ \_ SCINO

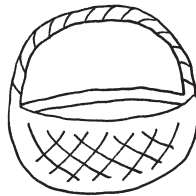


AN \_ \_ RA

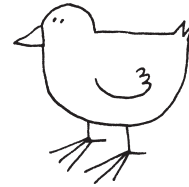
 PRONUNCIA IL NOME E COMPLETA CON **CE, CI**.




\_ \_ POLLA









\_ \_ STO

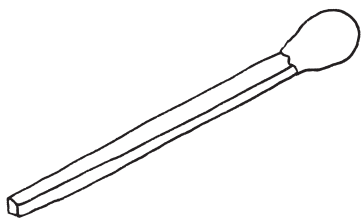
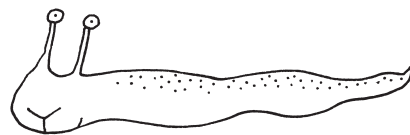








PUL \_ \_ NO

 SCRIVI LA LETTERA INIZIALE DEL NOME DI OGNI FIGURA. POI FORMA LE SILLABE E SCRIVI LA PAROLA FINALE. INFINE COLLEGA LA PAROLA CON IL DISEGNO ESATTO.

|   |   |   |   |   |   |
|---|---|---|---|---|---|
|  |  |  |  |  |  |
| <b>L</b>  | <b>U</b>  |   |   |   |   |
| ↓   | ↓   | ↓   | ↓   | ↓   | ↓   |
| <b>L</b>  | <b>U</b>  |   |   |   |   |

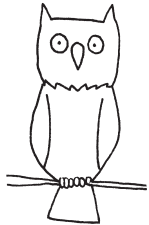
**LU**       



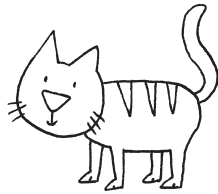
|   |   |  |   |   |   |
|---|---|--|---|---|---|
|  |  |  |  |  |  |
|   |   |  |   |   |   |
| ↓   | ↓   | ↓  | ↓   | ↓   | ↓   |
|   |   |  |   |   |   |

## UNA LETTERA, DUE SUONI

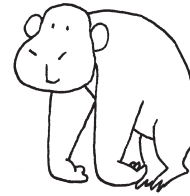
 PRONUNCIA IL NOME E COMPLETA CON **GA, GO, GU**.



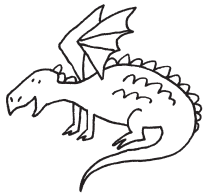
\_\_\_ FO



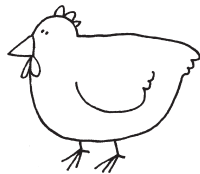
\_\_\_ TTO



\_\_\_ RILLA



DRA \_\_\_

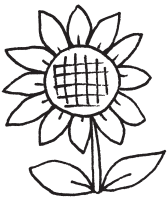


\_\_\_ LLINA



CAN \_\_\_ RO

 PRONUNCIA IL NOME E COMPLETA CON **GE, GI**.



\_\_\_ RASOLE




\_\_\_ LATO

\_\_\_ RAFFA



\_\_\_ CO



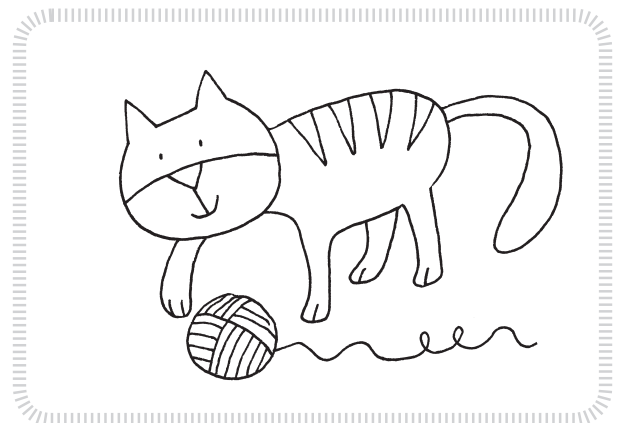
 NELLO SCHEMA SCOPRI E COLORA LE PAROLE: CIRCO, GABBIA, CERINO, CUCINA. CON LE LETTERE RIMASTE POTRAI COMPLETARE LA FRASE.

|   |   |   |   |   |   |   |   |
|---|---|---|---|---|---|---|---|
| C | U | C | I | N | A | C | E |
| C | I | C | I | R | C | O | A |
| C | E | R | I | N | O | C | E |
| N | A | G | A | B | B | I | A |

UGO MANGIA \_\_\_ A \_\_\_

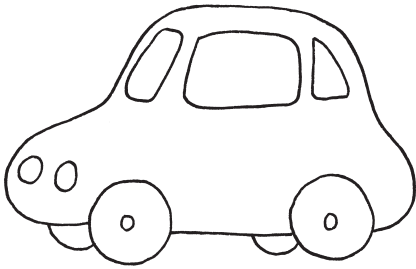
 LEGGI E COLORA IL DISEGNO.

IL GATTO GIOCA CON UN GOMITOLO.



LA PAROLA GIUSTA

 CERCHIA LA PAROLA GIUSTA.

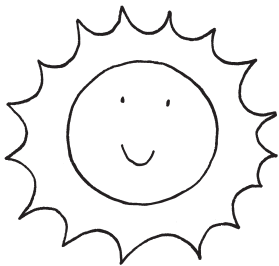


AUOT

AUTO

ATUO

AOTU



SELO

OLES

SOEL

SOLE



SEAL

SELA

SALE

ASLE



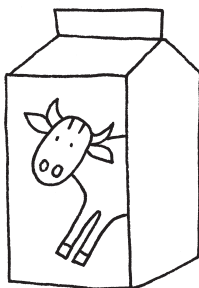
OSOS

OSSO

OOSS

SOOS

 INDIVIDUA IN OGNI RIQUADRO LA PAROLA GIUSTA E COLORALA DI GIALLO.



SLOLATTEMI



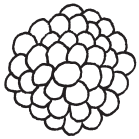
LSMQRTUOVO

## CI VUOLE ORDINE!



METTI IN ORDINE LE LETTERE E SCRIVI LE PAROLE ACCANTO AI DISEGNI.

A - O - R - M



-----

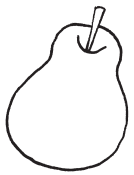


-----

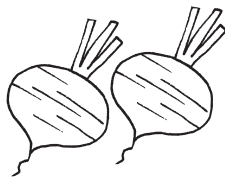


-----

A - E - P - R



-----



-----



-----

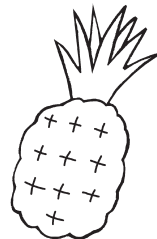


RIORDINA LE LETTERE PER FORMARE LE PAROLE. POI SCRIVILE.



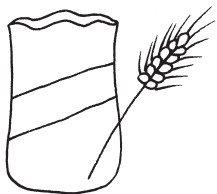
A E O M N T

.....



A N N A A S

.....



A I A F N R

.....



A O E P N S

.....



RIORDINA LE SILLABE PER FORMARE LE PAROLE. POI SCRIVILE.

VA DI NO

.....

ME RI NU

.....

MO LI NE

.....

LE VO CA

.....

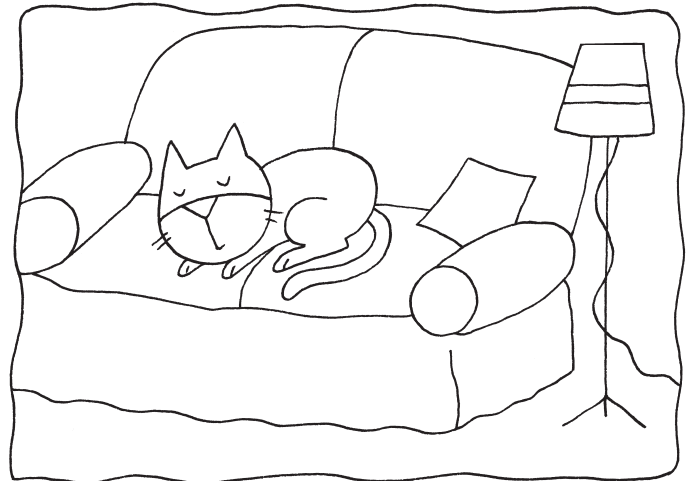


UNA FRECCIA IN AIUTO

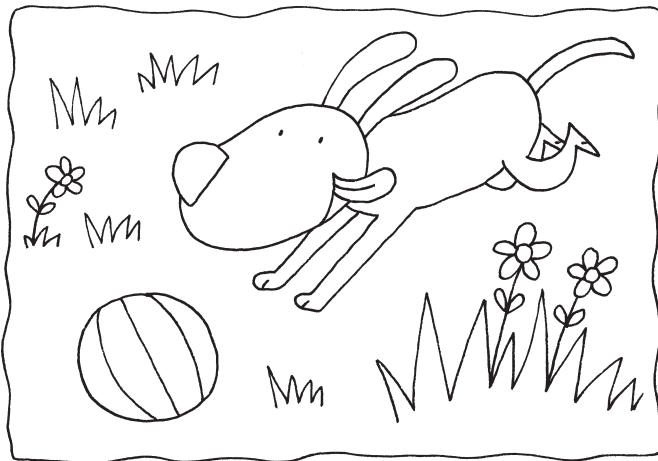


OSSERVA IL DISEGNO, GUARDA LA FRECCIA CHE INDICA LA PARTENZA E SCRIVI LA FRASE.

GATTO      SUL  
 DIVANO      IL      DORME



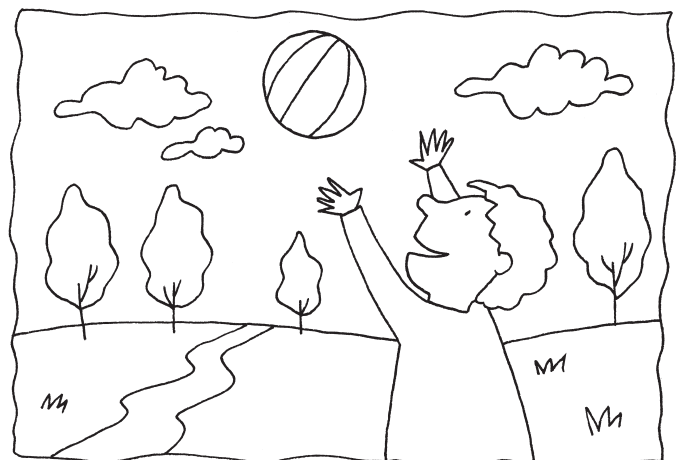
.....  
 .....



IL      RINCORRE  
 CANE      PALLONE      IL

.....  
 .....

LANCIA      PALLA  
 LUCA      ALTO  
 IN      LA



.....  
 .....

## METTO IN ORDINE DA SOLO



OSSERVA IL DISEGNO, LEGGI I CARTELLINI E SCRIVI LA FRASE.  
ATTENTO! IL CARTELLINO DI PARTENZA È EVIDENZIATO.



SARA

UN

CON

FRATELLINO

ALBERO

SOTTO

IL

GIOCA

.....  
.....  
.....  
.....

ANNA

ALTALENE

SULLE

GIARDINI

LUCA

E

AI

SONO

.....  
.....  
.....  
.....



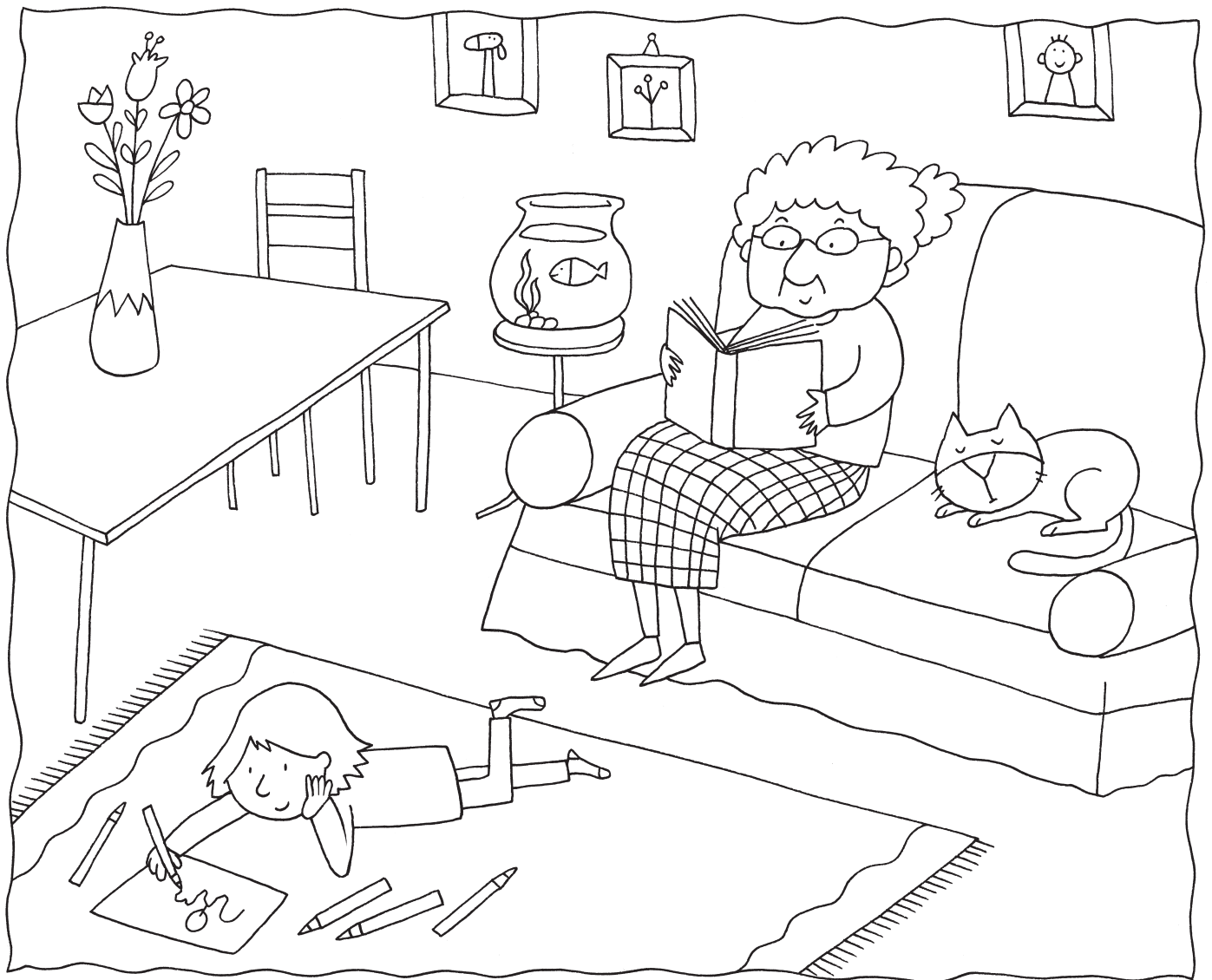
LA PRIMA COLAZIONE



OSSERVA CON ATTENZIONE L'IMMAGINE E RISPONDI SCRIVENDO SÌ OPPURE NO.

- SILVIA E MATTEO SONO SEDUTI? .....
- PARLANO? .....
- POI ANDRANNO A GIOCARE? .....
- CHE COSA MANGIANO?
  - FRUTTA? .....
  - PANE? .....
  - CAFFÈ? .....
  - LATTE? .....
  - BISCOTTI? .....

## IN FAMIGLIA



LEGGI E OSSERVA CON ATTENZIONE L'IMMAGINE.  
POI SCRIVI **V** SE L'AFFERMAZIONE È VERA, **F** SE È FALSA.

- NEL TINELLO C'È UN ACQUARIO.
- ARIANNA ESEGUE I COMPITI DI ITALIANO.
- SUL TAVOLO C'È UN VASO DI FIORI.
- IL GATTO MEO DORME SUL TAPPETO.
- NONNA MARIA LEGGE.
- NELLA STANZA C'È UN CANE.

## UNA FRASE PER OGNI DISEGNO



“LEGGI” OGNI DISEGNO E SCRIVI LO STESSO NUMERO NEL QUADRATINO DELLA FRASE CORRISPONDENTE.

SCRIVI POI LA FRASE DEL DISEGNO RIMASTO.

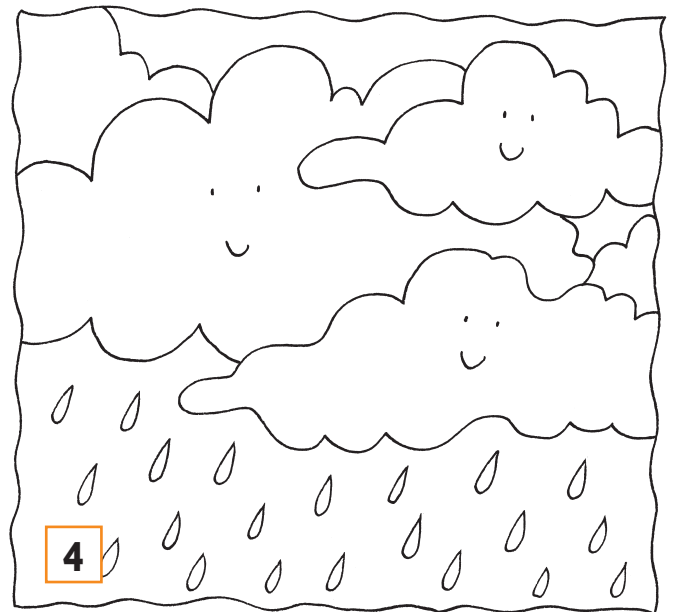
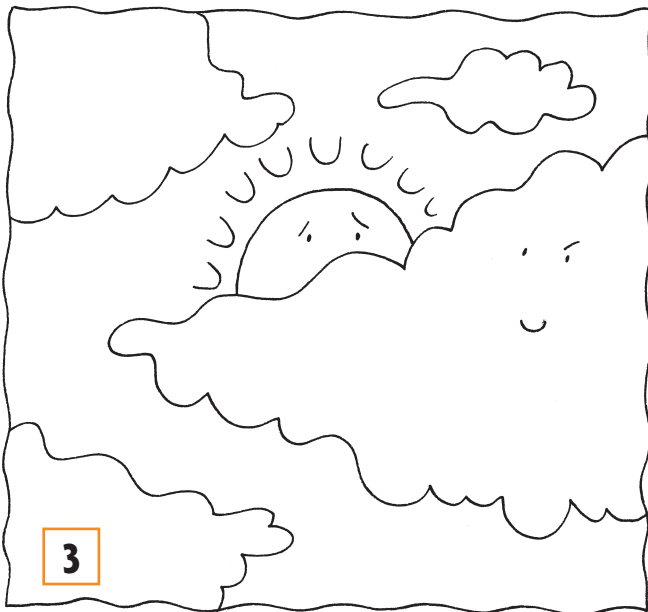
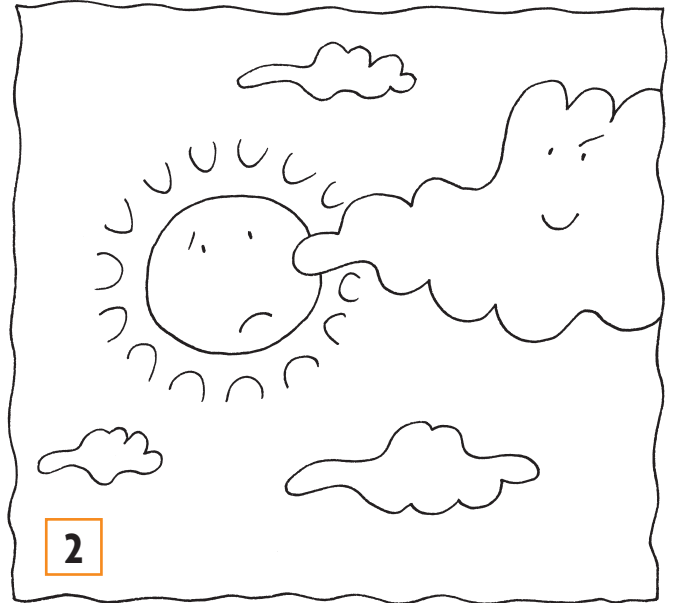
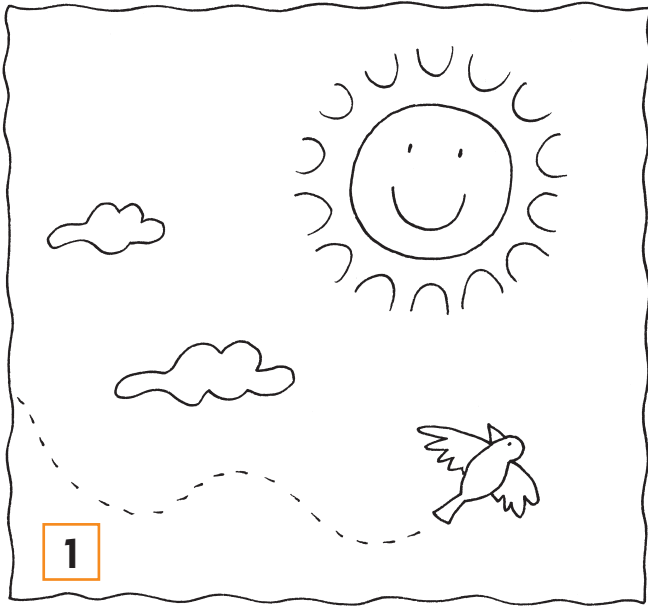


- MARCO CORRE SUL PRATO.
- MARCO CALCIA IL PALLONE.
- MARCO CORRE A SCUOLA.
- .....

## IL SOLE E LE NUVOLE



“LEGGI” OGNI DISEGNO E SCRIVI LE FRASI CHE MANCANO PER COMPLETARE LA STORIA.

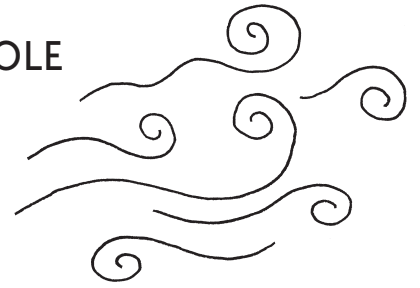


- 1 IL SOLE CONTENTO SPLENDE IN CIELO.
- 2 IL SOLE È TRISTE: ARRIVA .....
- 3 .....
- 4 .....

CHE VENTO!



UN VENTO BIRICHINO HA AMMUCCHIATO LE PAROLE  
DELLE FRASI SCRITTE DA BAMBINI COME TE.  
AIUTALI A RISCRIVERE LE FRASI.



NEL CIELO CI SONO TANTENUVOLETTE BIANCHE.

.....

.....

LENUVOLETTE GIOCANO ANA NASCONDERE IL SOLE.

.....

.....

IL SOLE SI DIVERTE A RISCALDARE LE NUVOLETTE.

.....

.....

LENUVOLETTE SI SENTONO PIÙ LEGGERE E TANTO ALLEGRE.

.....

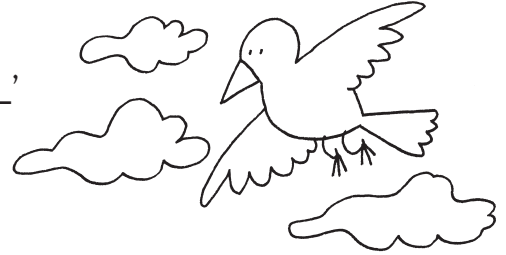
.....

## PAROLE IN ORDINE



RIORDINA LE PAROLE E SCRIVI UNA FRASE CHE ABBA SIGNIFICATO.

**ESEMPIO:** NUVOLE UCCELLINO LE VOLA TRA L'  
L'UCCELLINO VOLA TRA LE NUVOLE.

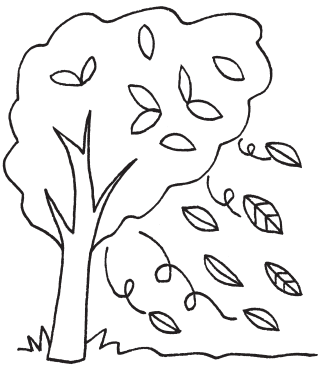


MOLTO VIOLE LE SONO PROFUMATE.

.....

LE ZANNE AVORIO DI SONO ELEFANTI DEGLI.

.....

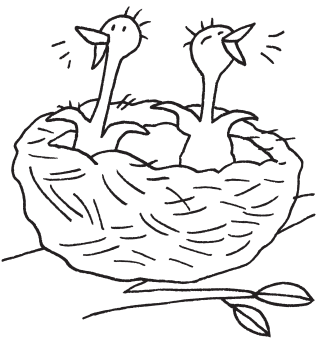


DAGLI ALBERI AUTUNNO CADONO FOGLIE LE IN.

.....

CANNOCCHIALE IL AVVICINA LONTANI GLI OGGETTI.

.....



NIDO PIGOLANO NEL APPENA UCCELLINI GLI NATI.

.....

TRENO CORRE IL VELOCE BINARI SUI.

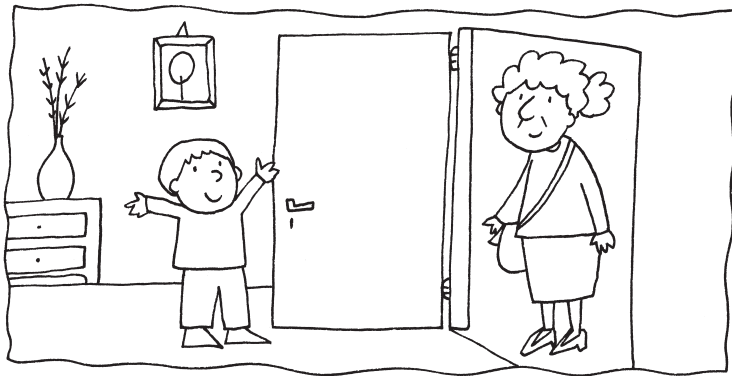
.....



## PICCOLE STORIE DA RICOSTRUIRE

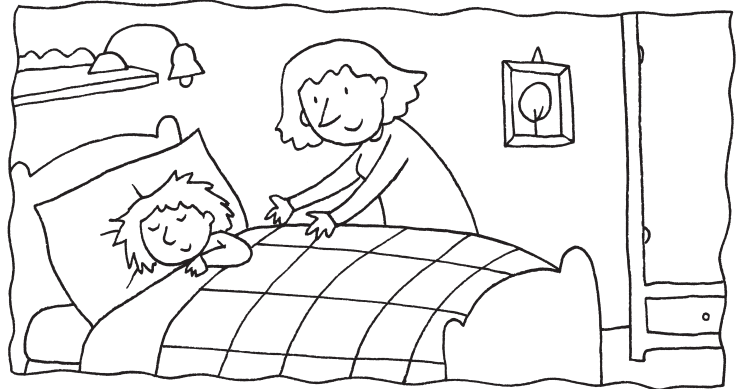


LEGGI LE FRASI. SCRIVI IL NUMERO PER RIORDINARLE E FORMARE UN BREVE RACCONTO.



- ENTRA LA NONNA.
- APRO LA PORTA.
- SUONA IL CAMPANELLO.

- ANNA SI VESTE.
- LA MAMMA SVEGLIA ANNA.
- ANNA SI ALZA DAL LETTO.



- LA MAMMA PREPARA LA TORTA.
- I BAMBINI MANGIANO LA TORTA.
- LA MAMMA CUOCE IN FORNO LA TORTA.

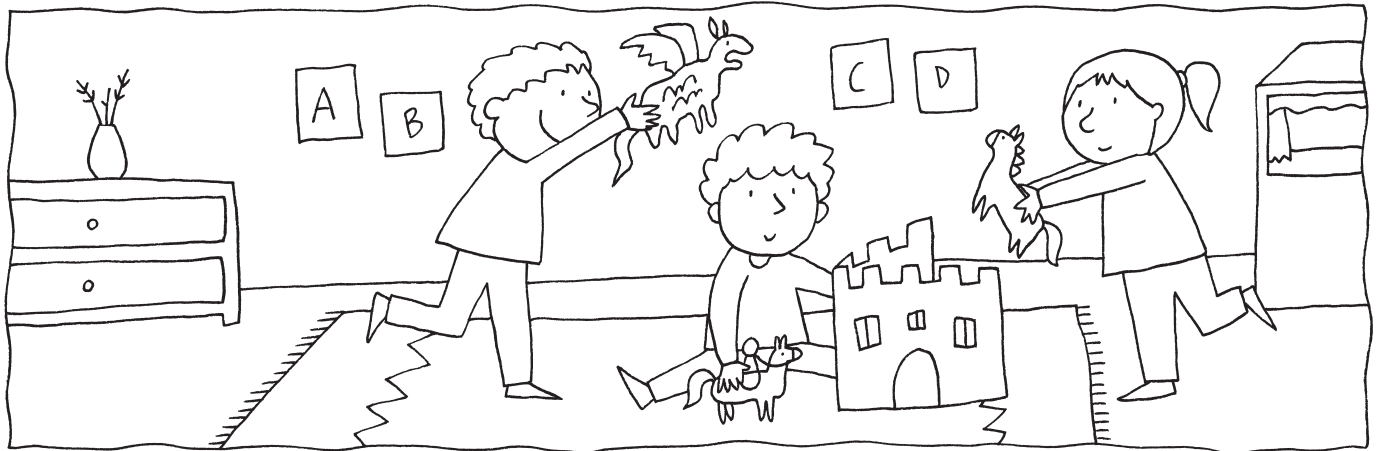
- PREPARA LA BORSA PER LA PISCINA.
- LUCA FINISCE I COMPITI.
- FINALMENTE NUOTA CON GLI AMICI.



## CHE COSA MANCA?

 COMPLETA LE FRASI.

- IL SOLE RISCALDA ..... TERRA.
- IL VINO VIENE PRODOTTO ..... L'UVA.



- È BELLO STARE ..... GLI AMICI.
- NEL CIELO, DI NOTTE, BRILLANO ..... STELLE.
- L'ARIA È INDISPENSABILE ..... VIVERE.
- LA TARTARUGA ..... UN ANIMALE LENTO.
- QUANDO CI SARÀ ..... NEVE, ANDREMO ..... SCIARE.
- L'ARPA È ..... STRUMENTO MUSICALE.

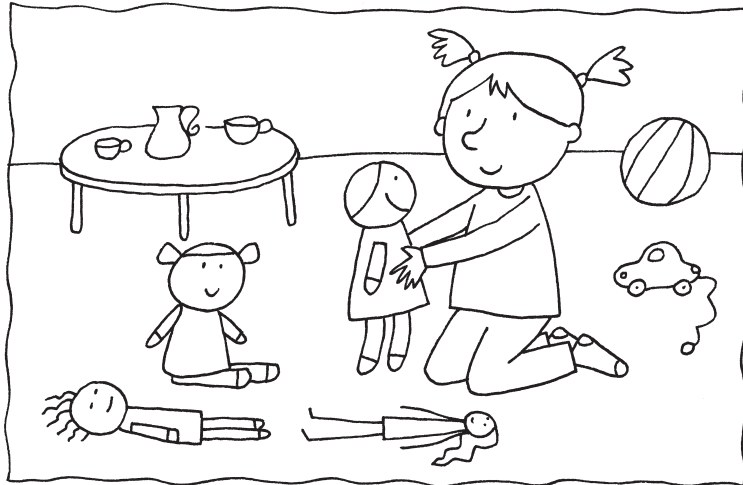


- IN PALESTRA ABBIAMO FATTO ..... GIOCHI MOLTO DIVERTENTI.
- OGGI HO FATTO ..... ERRORI DI DISTRAZIONE.
- HO GIÀ PREPARATO ..... ZAINO PER LA GITA.

## PAROLE SBAGLIATE



LEGGI E SOTTOLINEA LA PAROLA SBAGLIATA PRESENTE IN OGNI FRASE. POI SCRIVILA IN MODO CORRETTO SUI PUNTINI.



• TUTTI I GIORNI SARA GIOCA CON LE BABOLE.

.....

• HO VISTO UN UOMO CHE ATTRAVERSAVA LA STADA.

.....

• I MIEI NONNI MAGIANO LA MINESTRA TUTTE LE SERE.

.....

• AL PARCO I BAMBINI SI DIVERTONO SULL'ATALENA.

.....

• LUCA È CADUTO DALLA BICILETTA.

.....

• NEL CATELLO DELLA STREGA VIVEVANO TANTI FANTASMI.

.....

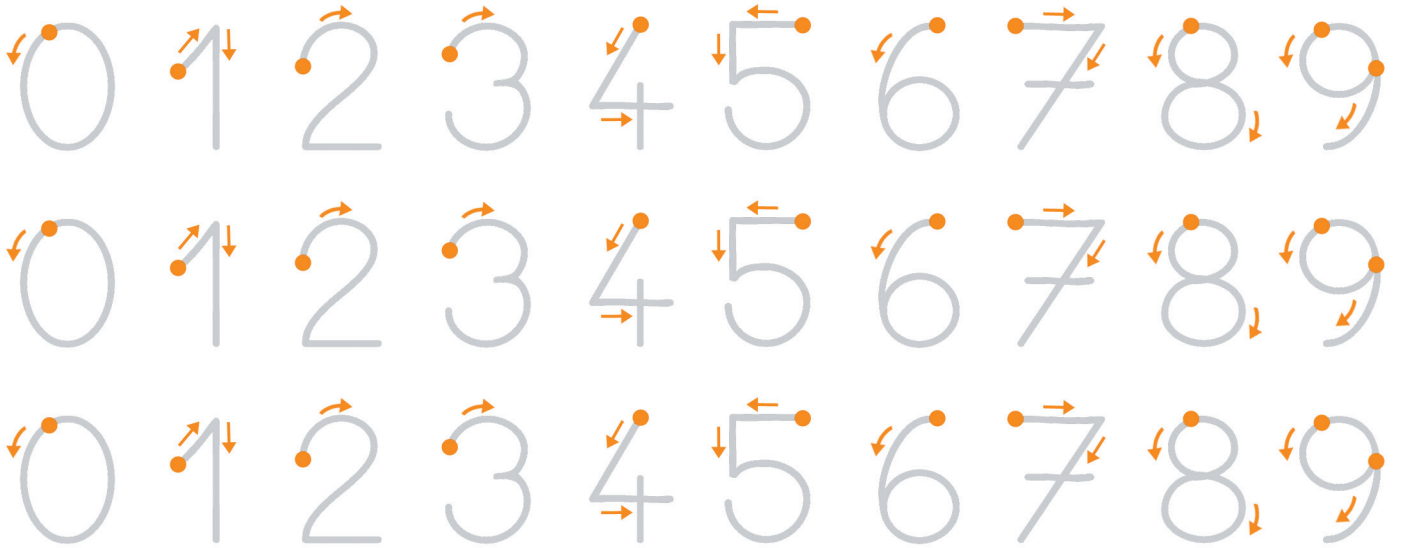
• LA MAMMA HA PERSO LE CIAVI DELL'AUTO.

.....



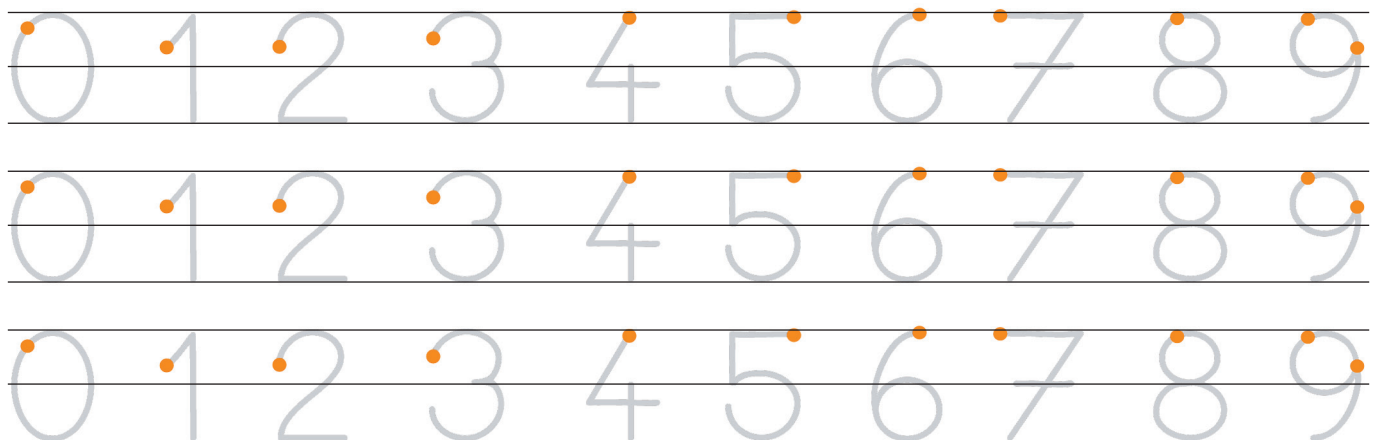
### NUMERI E FRECCE

 SEGUI LE FRECCE E RIPASSA I NUMERI.



Three rows of numbers from 0 to 9. Each number is light gray and has small orange dots at the starting points of strokes, with arrows indicating the direction of the stroke. The first row shows the numbers with arrows. The second and third rows are identical to the first, providing more tracing practice.

 ORA CONTINUA TU, SENZA LE FRECCE.



Three rows of numbers from 0 to 9 on a four-line grid. The numbers are light gray and have small orange dots at the starting points of strokes. The first row shows the numbers with dots. The second and third rows are identical to the first, providing more independent practice.



A row of ten boxes, each containing a number from 0 to 9. Each number is light gray and has a small orange dot at the starting point of the stroke.



A second row of ten boxes, each containing a number from 0 to 9. Each number is light gray and has a small orange dot at the starting point of the stroke.



A row of ten boxes, each containing a number from 0 to 9. The boxes alternate between black and white backgrounds. The numbers are light gray and have a small orange dot at the starting point of the stroke.



A row of ten boxes, each containing a number from 0 to 9. The numbers are light gray and have a small orange dot at the starting point of the stroke.

## NUMERI, PUNTI E RIGHE



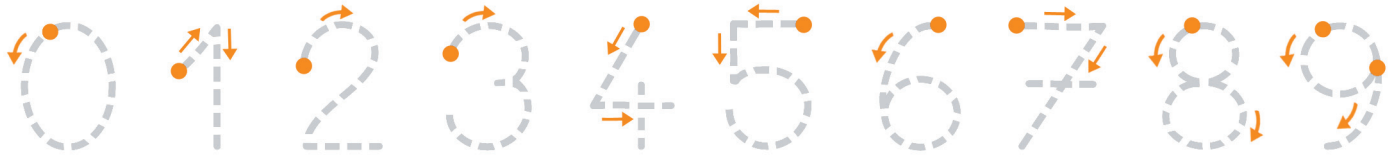
COMPLETA LA PAGINA DEI NUMERI. OGNI VOLTA CHE ARRIVI ALLA FINE DELLA RIGA COLORA QUELLA SUBITO SOTTO E CONTINUA. SEGUI L'ESEMPIO.

|                     |   |   |   |   |  |  |  |  |  |  |  |  |  |  |  |  |  |  |  |
|---------------------|---|---|---|---|--|--|--|--|--|--|--|--|--|--|--|--|--|--|--|
| 0                   | • | 0 | • | 0 |  |  |  |  |  |  |  |  |  |  |  |  |  |  |  |
| [Orange shaded row] |   |   |   |   |  |  |  |  |  |  |  |  |  |  |  |  |  |  |  |
| 1                   | • | 1 | • |   |  |  |  |  |  |  |  |  |  |  |  |  |  |  |  |
| [Orange shaded row] |   |   |   |   |  |  |  |  |  |  |  |  |  |  |  |  |  |  |  |
| 2                   | • |   |   |   |  |  |  |  |  |  |  |  |  |  |  |  |  |  |  |
| 3                   |   |   |   |   |  |  |  |  |  |  |  |  |  |  |  |  |  |  |  |
| 4                   |   |   |   |   |  |  |  |  |  |  |  |  |  |  |  |  |  |  |  |
| 5                   |   |   |   |   |  |  |  |  |  |  |  |  |  |  |  |  |  |  |  |
| 6                   |   |   |   |   |  |  |  |  |  |  |  |  |  |  |  |  |  |  |  |
| 7                   |   |   |   |   |  |  |  |  |  |  |  |  |  |  |  |  |  |  |  |
| 8                   |   |   |   |   |  |  |  |  |  |  |  |  |  |  |  |  |  |  |  |
| 9                   |   |   |   |   |  |  |  |  |  |  |  |  |  |  |  |  |  |  |  |

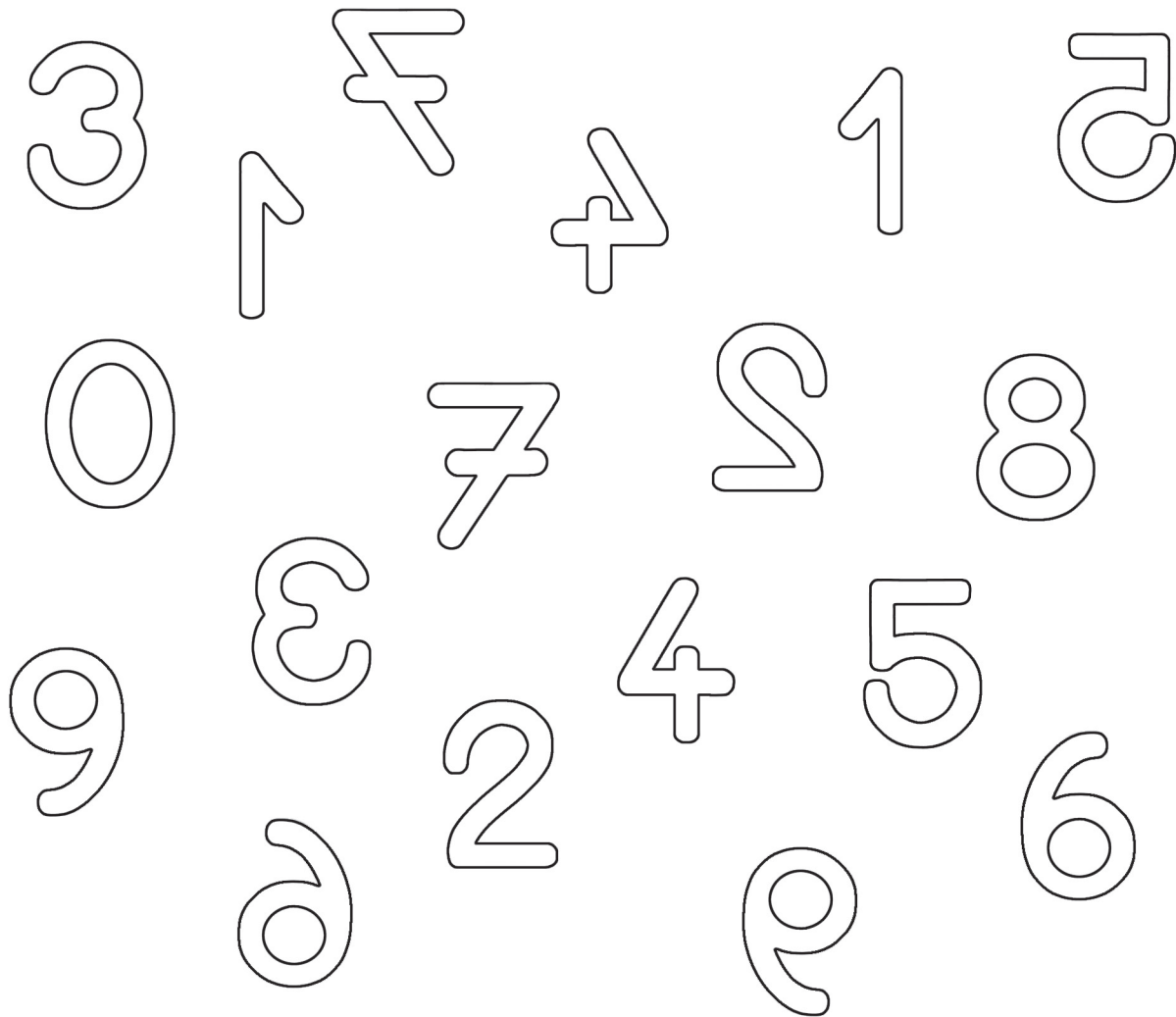


## LA GIRAVOLTA DEI NUMERI

 RIPASSA I NUMERI PARTENDO DAL PUNTINO E SEGUENDO LE FRECCE.



 COLORA SOLO I NUMERI SCRITTI NEL VERSO GIUSTO.

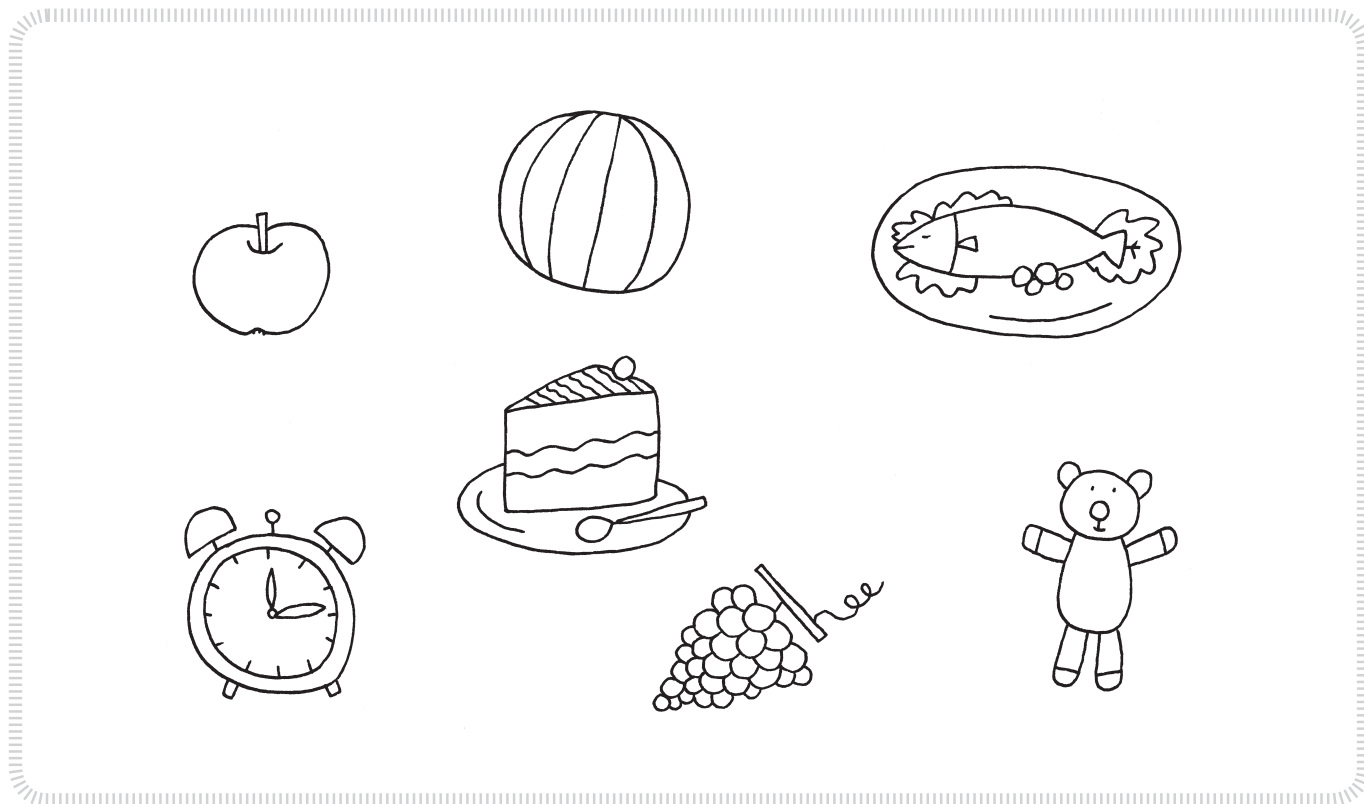


 RISCRIVI IN ORDINE I NUMERI CHE HAI COLORATO.

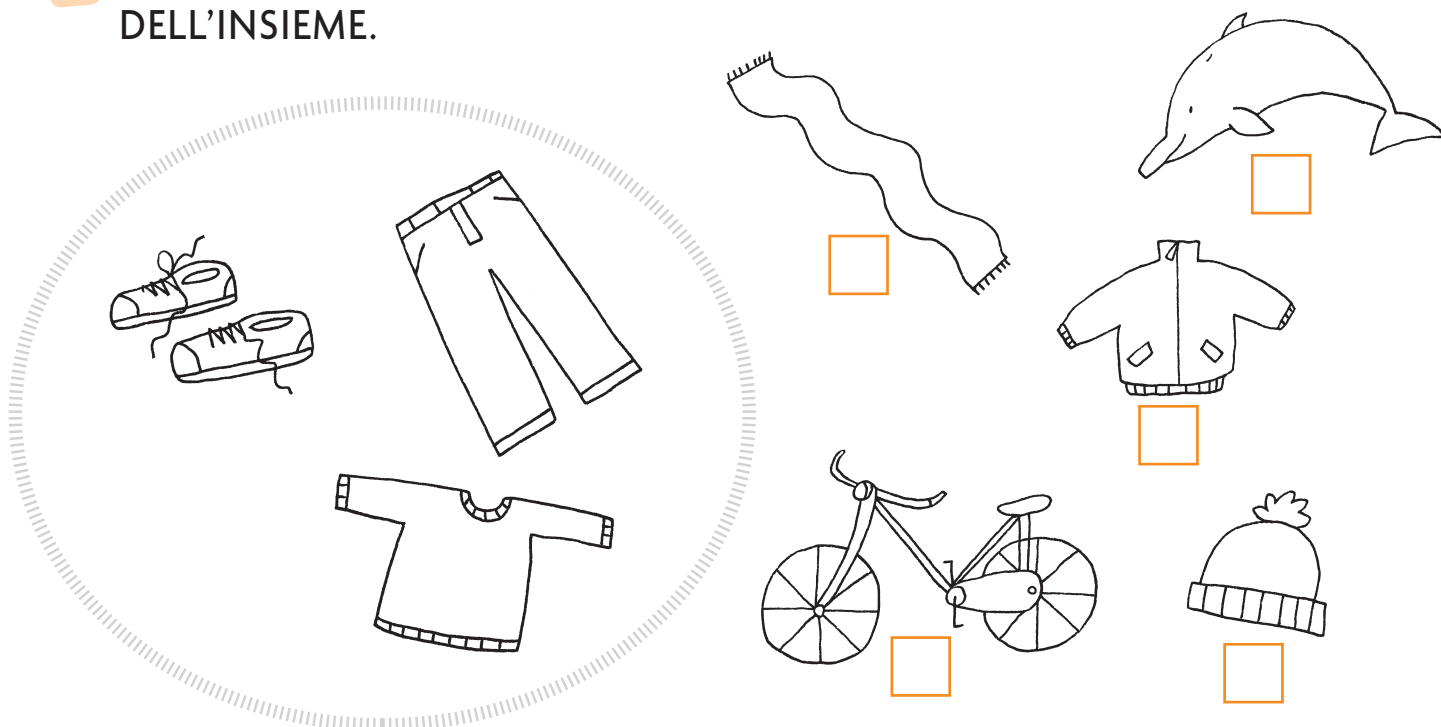
|  |  |  |  |  |  |  |  |  |  |
|--|--|--|--|--|--|--|--|--|--|
|  |  |  |  |  |  |  |  |  |  |
|--|--|--|--|--|--|--|--|--|--|

## INSIEME PERCHÉ...

 CHIUDI DENTRO A UNA LINEA TUTTO CIÒ CHE SI PUÒ MANGIARE.



 INDICA CON UNA X GLI ELEMENTI CHE POTREBBERO FAR PARTE DELL'INSIEME.





## INSIEME... PER GIOCO

 SEGUI IL PERCORSO CHE FA IL PRINCIPE PER RAGGIUNGERE LA PRINCIPESSA E CERCHIA L'INTRUSO DI OGNI INSIEME.



 ORA METTI IN ORDINE L'INIZIALE DI OGNI INTRUSO: SCOPRIRAI CHE COSA PORTERÀ IN DONO IL PRINCIPE.

.....



## A CASA DEL 5



OSSERVA LE FINESTRE ACCESE  O SPENTE  E COMPLETA COME NEGLI ESEMPI.

5

|                                     |                          |
|-------------------------------------|--------------------------|
| <input checked="" type="checkbox"/> | <input type="checkbox"/> |
| 0                                   | 5                        |
|                                     |                          |
|                                     |                          |
|                                     |                          |
|                                     |                          |
|                                     |                          |

5

|                                     |
|-------------------------------------|
| <input checked="" type="checkbox"/> |
| 2                                   |
|                                     |
|                                     |
|                                     |
|                                     |
|                                     |



COLORA SOLO GLI ELEMENTI INDICATI DAL NUMERO. OSSERVA GLI ESEMPI.

|   |                                     |                                     |                                     |                                     |                          |
|---|-------------------------------------|-------------------------------------|-------------------------------------|-------------------------------------|--------------------------|
| 4 | <input checked="" type="checkbox"/> | <input checked="" type="checkbox"/> | <input checked="" type="checkbox"/> | <input checked="" type="checkbox"/> | <input type="checkbox"/> |
| 2 | <input type="checkbox"/>            | <input type="checkbox"/>            | <input type="checkbox"/>            | <input type="checkbox"/>            | <input type="checkbox"/> |
| 5 | <input type="checkbox"/>            | <input type="checkbox"/>            | <input type="checkbox"/>            | <input type="checkbox"/>            | <input type="checkbox"/> |
| 1 | <input type="checkbox"/>            | <input type="checkbox"/>            | <input type="checkbox"/>            | <input type="checkbox"/>            | <input type="checkbox"/> |
| 3 | <input type="checkbox"/>            | <input type="checkbox"/>            | <input type="checkbox"/>            | <input type="checkbox"/>            | <input type="checkbox"/> |

|   |                                     |                                     |                                     |                          |                          |
|---|-------------------------------------|-------------------------------------|-------------------------------------|--------------------------|--------------------------|
| 3 | <input checked="" type="checkbox"/> | <input checked="" type="checkbox"/> | <input checked="" type="checkbox"/> | <input type="checkbox"/> | <input type="checkbox"/> |
| 5 | <input type="checkbox"/>            | <input type="checkbox"/>            | <input type="checkbox"/>            | <input type="checkbox"/> | <input type="checkbox"/> |
| 2 | <input type="checkbox"/>            | <input type="checkbox"/>            | <input type="checkbox"/>            | <input type="checkbox"/> | <input type="checkbox"/> |
| 4 | <input type="checkbox"/>            | <input type="checkbox"/>            | <input type="checkbox"/>            | <input type="checkbox"/> | <input type="checkbox"/> |
| 1 | <input type="checkbox"/>            | <input type="checkbox"/>            | <input type="checkbox"/>            | <input type="checkbox"/> | <input type="checkbox"/> |



QUANTI ELEMENTI NERI CI SONO IN OGNI FILA ORIZZONTALE? ALLENATI A LEGGERE TANTE VOLTE SENZA SCRIVERE IL NUMERO.

|                                     |                                     |                                     |                                     |                                     |
|-------------------------------------|-------------------------------------|-------------------------------------|-------------------------------------|-------------------------------------|
| <input checked="" type="checkbox"/> | <input checked="" type="checkbox"/> | <input checked="" type="checkbox"/> | <input type="checkbox"/>            | <input type="checkbox"/>            |
| <input checked="" type="checkbox"/> | <input type="checkbox"/>            | <input type="checkbox"/>            | <input type="checkbox"/>            | <input type="checkbox"/>            |
| <input checked="" type="checkbox"/> | <input checked="" type="checkbox"/> | <input checked="" type="checkbox"/> | <input checked="" type="checkbox"/> | <input checked="" type="checkbox"/> |
| <input checked="" type="checkbox"/> | <input checked="" type="checkbox"/> | <input type="checkbox"/>            | <input type="checkbox"/>            | <input type="checkbox"/>            |
| <input type="checkbox"/>            | <input type="checkbox"/>            | <input type="checkbox"/>            | <input type="checkbox"/>            | <input type="checkbox"/>            |
| <input checked="" type="checkbox"/> | <input checked="" type="checkbox"/> | <input checked="" type="checkbox"/> | <input checked="" type="checkbox"/> | <input type="checkbox"/>            |

|                                     |                                     |                                     |                                     |                                     |
|-------------------------------------|-------------------------------------|-------------------------------------|-------------------------------------|-------------------------------------|
| <input checked="" type="checkbox"/> | <input type="checkbox"/>            | <input type="checkbox"/>            | <input type="checkbox"/>            | <input type="checkbox"/>            |
| <input checked="" type="checkbox"/> | <input checked="" type="checkbox"/> | <input type="checkbox"/>            | <input checked="" type="checkbox"/> | <input checked="" type="checkbox"/> |
| <input checked="" type="checkbox"/> | <input checked="" type="checkbox"/> | <input checked="" type="checkbox"/> | <input checked="" type="checkbox"/> | <input checked="" type="checkbox"/> |
| <input checked="" type="checkbox"/> | <input type="checkbox"/>            | <input type="checkbox"/>            | <input type="checkbox"/>            | <input checked="" type="checkbox"/> |
| <input type="checkbox"/>            | <input type="checkbox"/>            | <input type="checkbox"/>            | <input type="checkbox"/>            | <input type="checkbox"/>            |
| <input checked="" type="checkbox"/> | <input type="checkbox"/>            | <input checked="" type="checkbox"/> | <input type="checkbox"/>            | <input checked="" type="checkbox"/> |

## A CASA DEL 10

OSSERVA LE FINESTRE ACCESE  O SPENTE  E COMPLETA COME NELL'ESEMPIO.

**10**

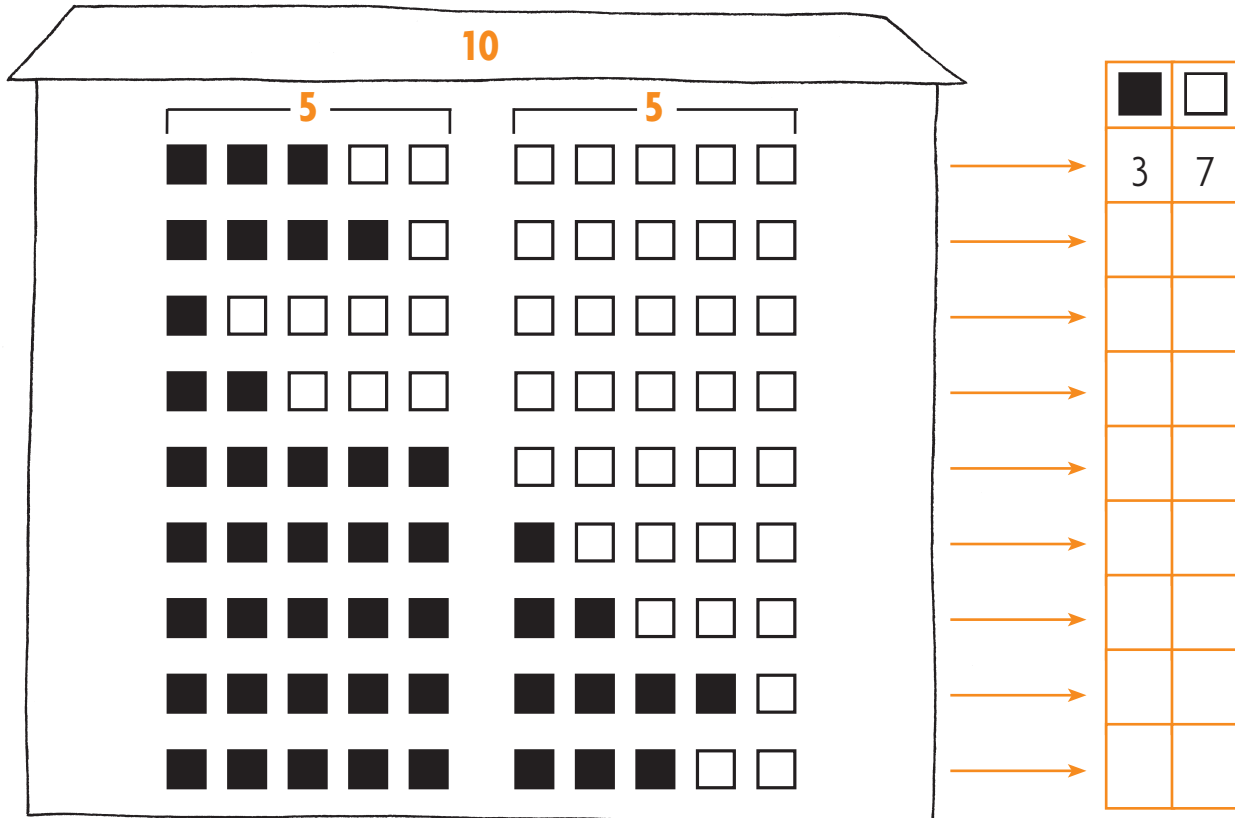
|                                     |                          |
|-------------------------------------|--------------------------|
| <input checked="" type="checkbox"/> | <input type="checkbox"/> |
| 1                                   | 9                        |
|                                     |                          |
|                                     |                          |
|                                     |                          |
|                                     |                          |
|                                     |                          |
|                                     |                          |
|                                     |                          |
|                                     |                          |

RIEMPI SOLO IL BICCHIERE INDICATO DAL NUMERO. OSSERVA L'ESEMPIO.

|    |  |  |  |
|----|--|--|--|
| 7  |  |  |  |
| 5  |  |  |  |
| 2  |  |  |  |
| 10 |  |  |  |
| 4  |  |  |  |
| 1  |  |  |  |
| 6  |  |  |  |
| 8  |  |  |  |
| 3  |  |  |  |
| 9  |  |  |  |

## IL 5 E IL 10

 OSSERVA LE FINESTRE ACCESE  O SPENTE  E COMPLETA.



|   |   |
|---|---|
|   |   |
| 3 | 7 |
|   |   |
|   |   |
|   |   |
|   |   |
|   |   |
|   |   |
|   |   |
|   |   |

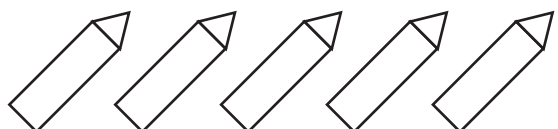
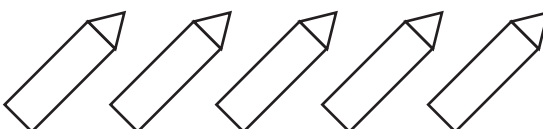
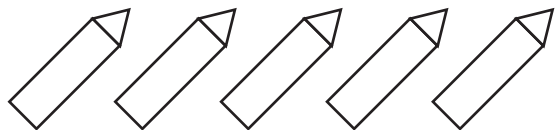
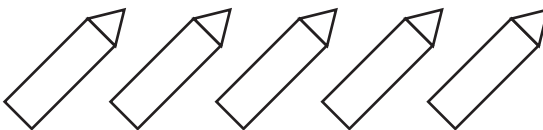
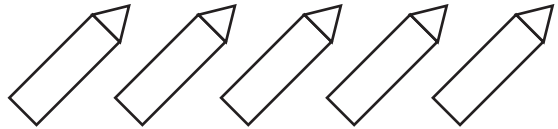
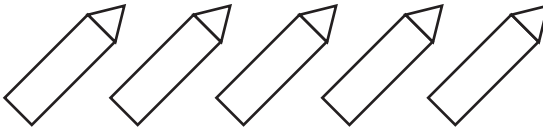
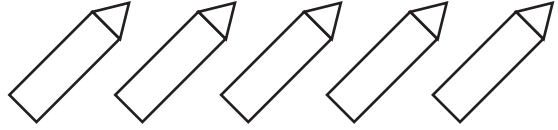
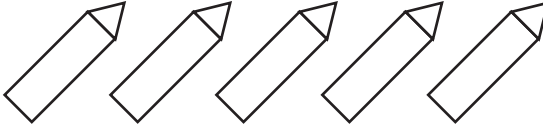


 RIEMPI LE BOTTIGLIE CHE MANCANO PER RAGGIUNGERE IL NUMERO INDICATO.
















|  |   |
|--|---|
|   | → <span style="border: 1px solid black; padding: 2px 10px;">7</span>  |
|   | → <span style="border: 1px solid black; padding: 2px 10px;">10</span> |
|   | → <span style="border: 1px solid black; padding: 2px 10px;">6</span>  |
|   | → <span style="border: 1px solid black; padding: 2px 10px;">9</span>  |
|   | → <span style="border: 1px solid black; padding: 2px 10px;">8</span>  |

## MI ALLENO FINO AL 10

 PER OGNI RIGA COLORA TANTI PASTELLI QUANTI INDICATI DAL NUMERO.

|   |  |   |
|---|--|---|
| 6 |   |   |
| 9 |   |   |
| 5 |   |   |
| 7 |   |   |
| 8 |  |  |

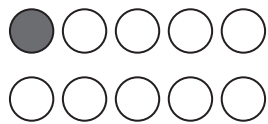
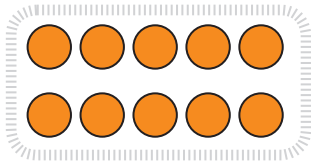
 QUANTI ELEMENTI COLORATI CI SONO IN OGNI RIGA ORIZZONTALE? ALLENATI A LEGGERE TANTE VOLTE SENZA SCRIVERE IL NUMERO.

|   |  |
|---|--|
|  |  |
|  |  |
|  |  |
|  |  |
|  |  |
|  |  |
|  |  |

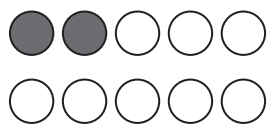
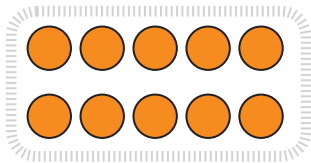
## OLTRE IL 10



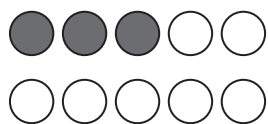
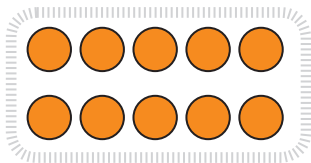
COMPLETA COME NELL'ESEMPIO, POI LEGGI TANTE VOLTE.



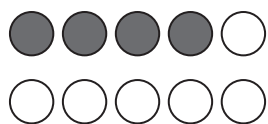
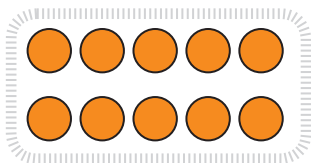
**11** → **10** e **1**  
UNDICI



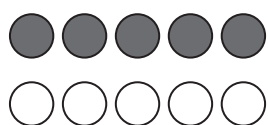
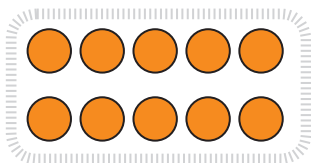
..... → ..... e .....



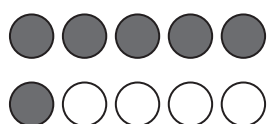
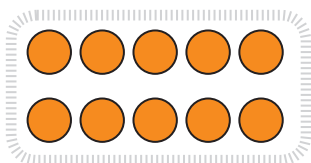
..... → ..... e .....



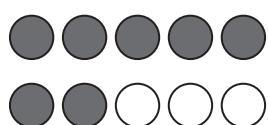
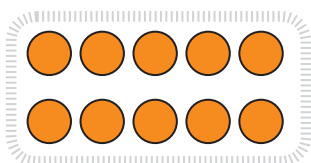
..... → ..... e .....



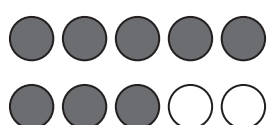
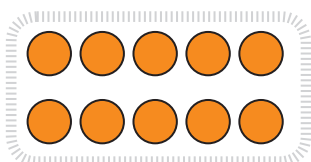
..... → ..... e .....



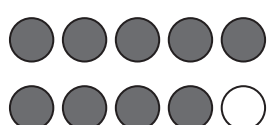
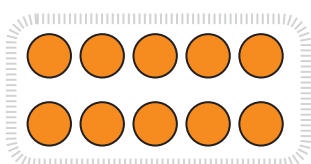
..... → ..... e .....



..... → ..... e .....



..... → ..... e .....

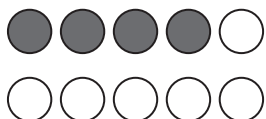
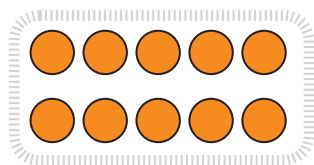


..... → ..... e .....

## FINO AL 20

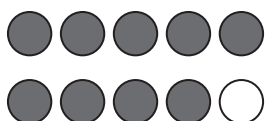
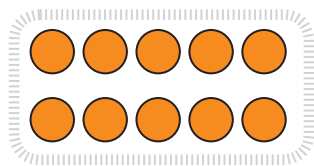


ALLENATI A CONTARE TANTE VOLTE I PALLINI COLORATI PRIMA DI COMPLETARE L'ESERCIZIO.



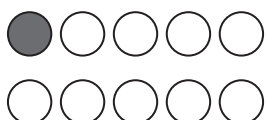
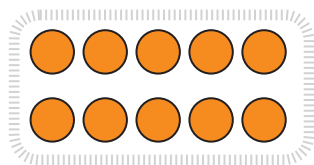
14

1 da e 4 u



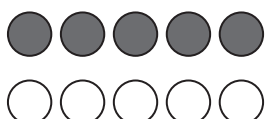
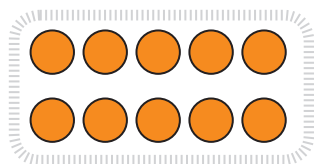
.....

..... da e ..... u



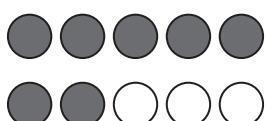
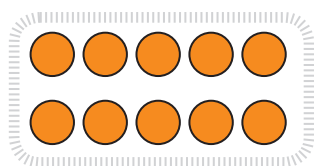
.....

..... da e ..... u



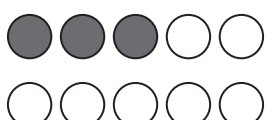
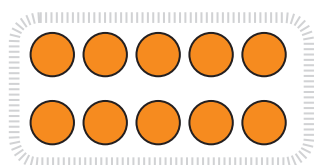
.....

..... da e ..... u



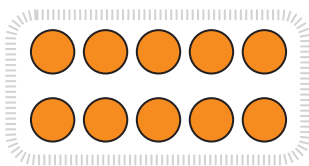
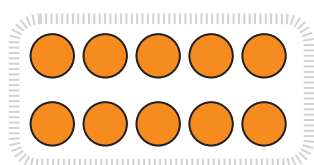
.....

..... da e ..... u



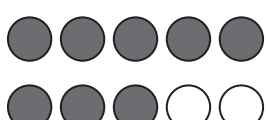
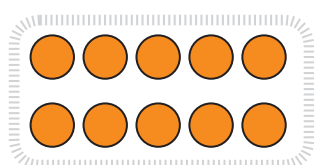
.....

..... da e ..... u



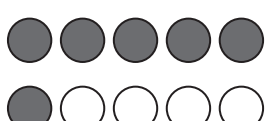
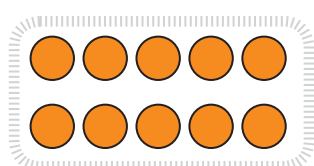
.....

..... da e ..... u



.....

..... da e ..... u



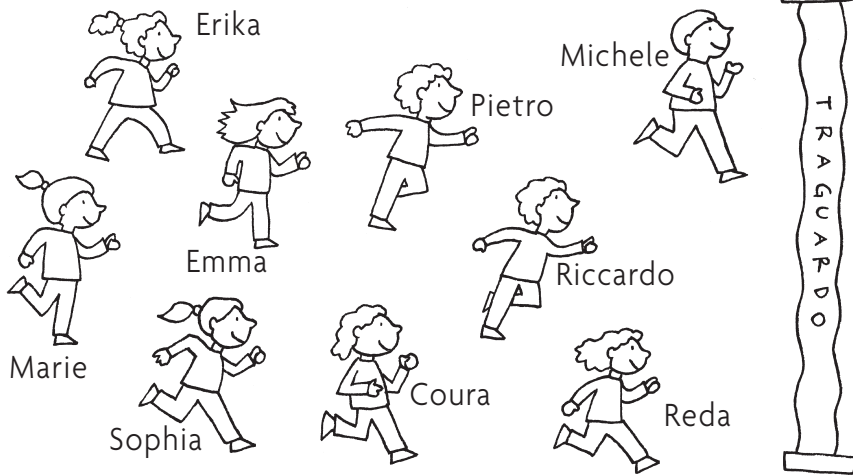
.....

..... da e ..... u

## FACCIAMO ORDINE!



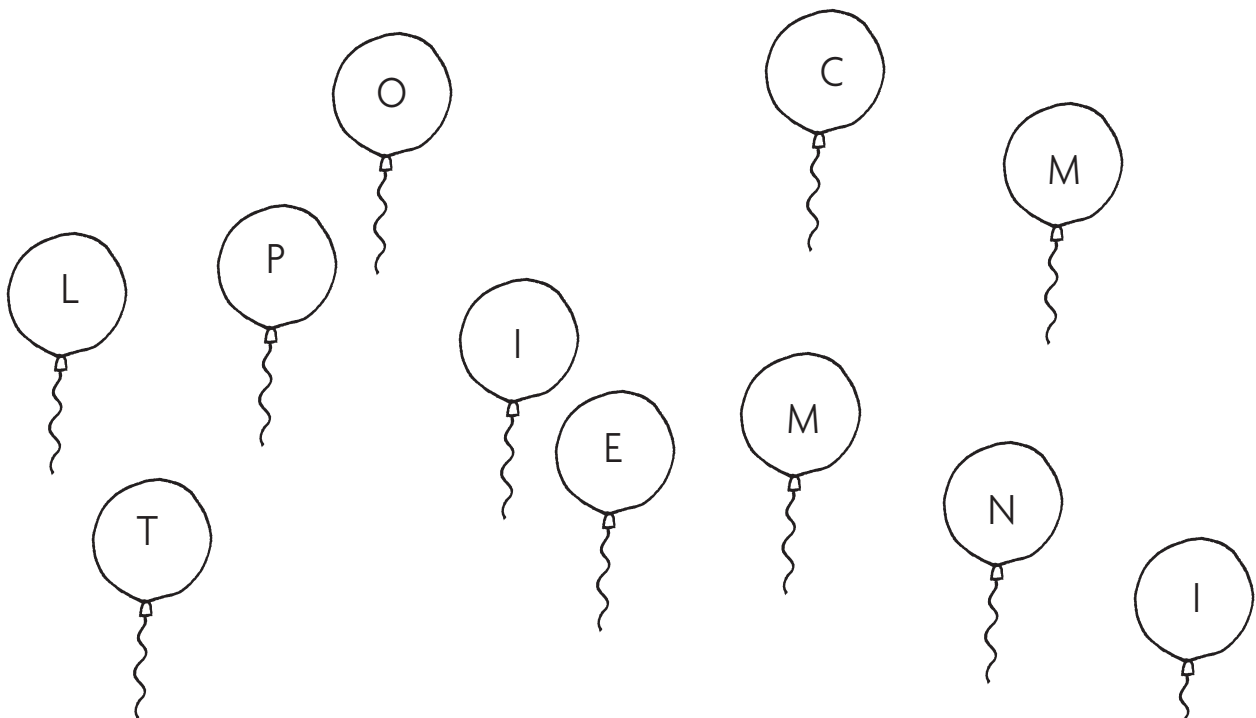
SCRIVI IL NUMERO E IL NOME DEI CORRIDORI NELLA POSIZIONE IN CUI SI TROVANO RISPETTO AL TRAGUARDO. IN CASO DI DUBBIO PUOI AIUTARTI FACENDO SCORRERE LA LINEA DEL TRAGUARDO CON LA MATITA.



|    |         |
|----|---------|
| 1° | MICHELE |
| 2° | REDA    |
|    |         |
|    |         |
|    |         |
|    |         |
|    |         |
|    |         |
|    |         |



SCRIVI LE LETTERE DEI PALLONCINI NELL'ORDINE IN CUI TOCCHERANNO IL SOFFITTO. SE AVRAI LAVORATO BENE TI SARANNO FATTI MOLTI...

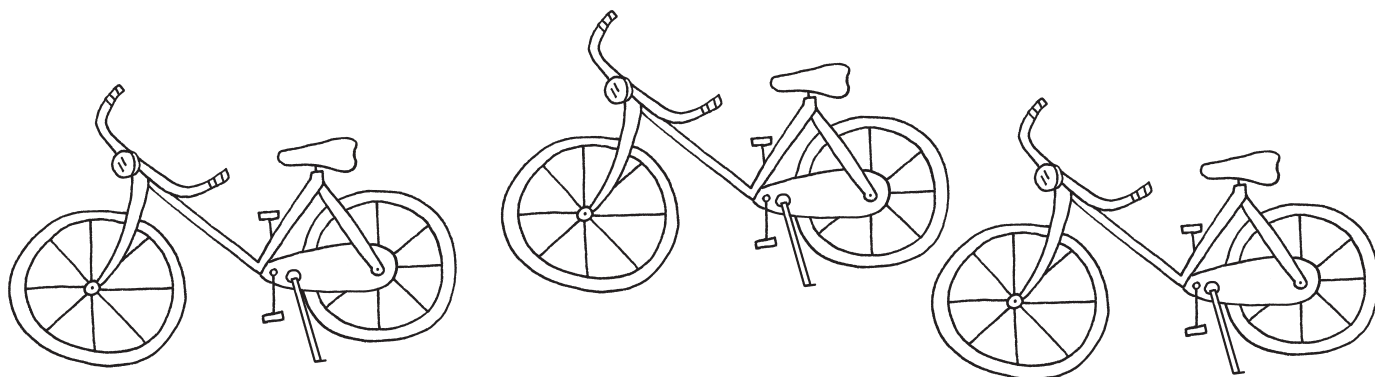


|    |    |  |  |  |  |  |  |  |  |  |
|----|----|--|--|--|--|--|--|--|--|--|
| 1° | 2° |  |  |  |  |  |  |  |  |  |
| C  |    |  |  |  |  |  |  |  |  |  |

## PROBLEMI ILLUSTRATI

 COMPLETA I DISEGNI E RISPONDI SEGNANDO UNA X SULLA CASELLA ESATTA.

- NEL CORTILE DELLA SCUOLA SONO PARCHEGGIATE 5 BICICLETTE. QUANTE RUOTE PUOI CONTARE?



5

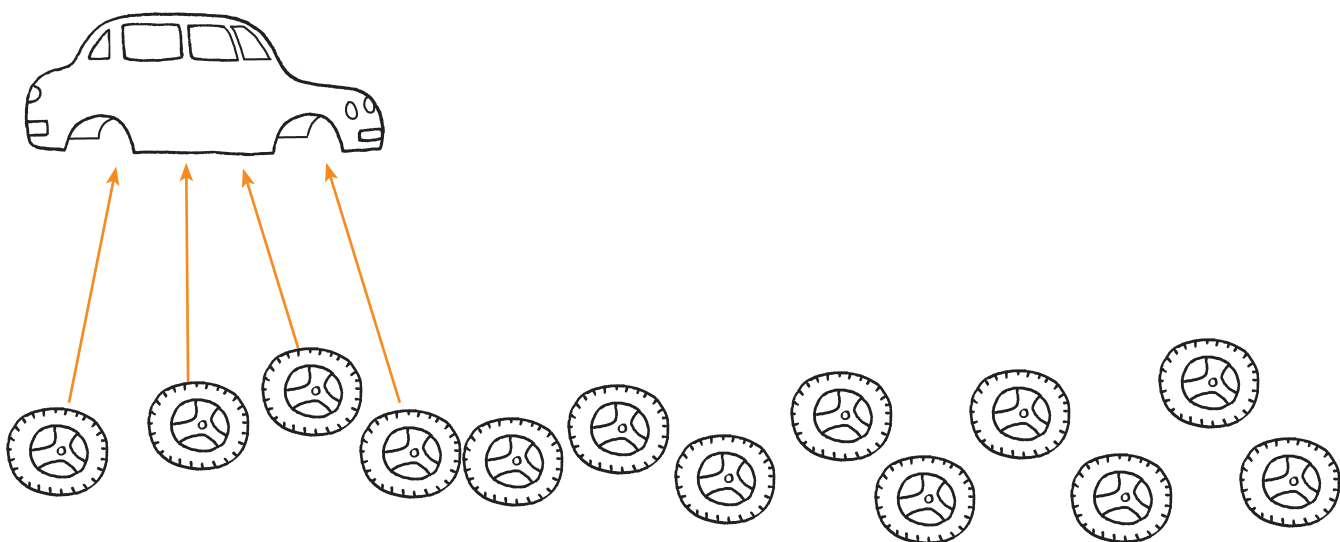
2

8

10

12

- NEL MAGAZZINO DI BATTISTA IL GOMMISTA SONO RIMASTI 13 PNEUMATICI. A QUANTE AUTOMOBILI POTRÀ CAMBIARE TUTTE LE GOMME? OSSERVA L'ESEMPIO E CONTINUA TU.



5

4

3

13

1

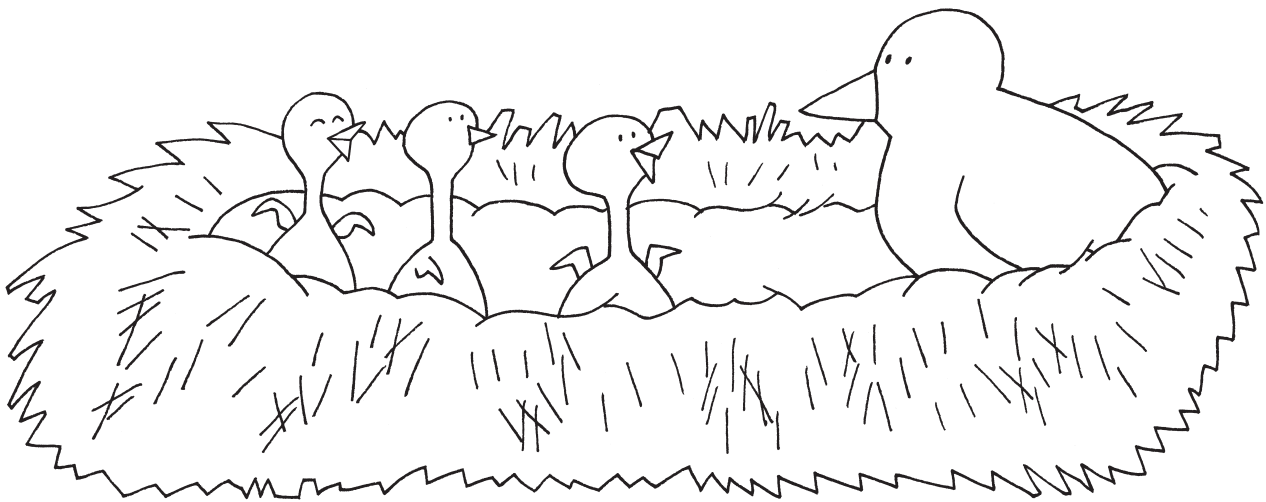


INDOVINELLI ILLUSTRATI



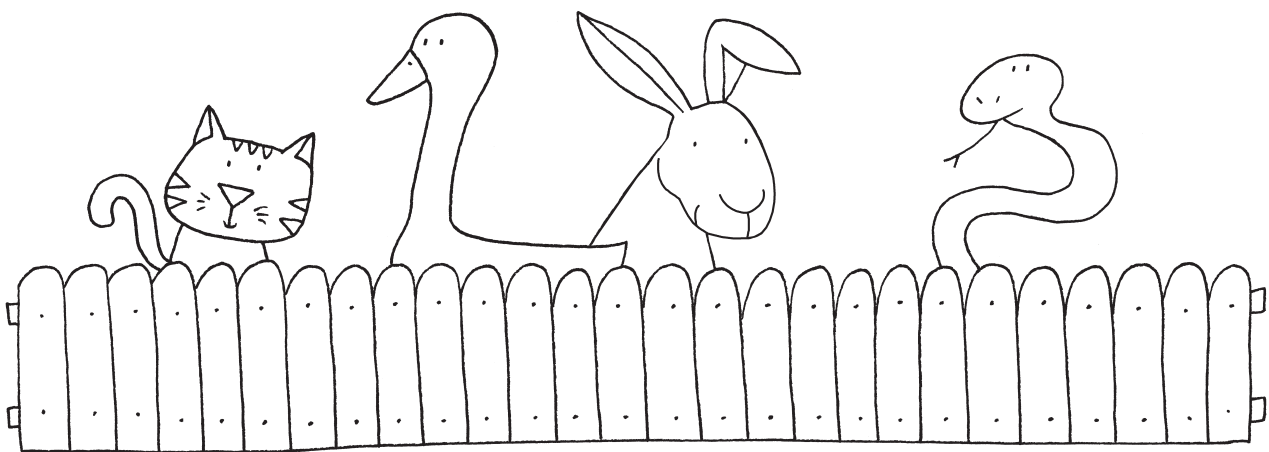
LEGGI I TESTI, OSSERVA I DISEGNI E RISPONDI.

- NEL NIDO, INSIEME ALLA MAMMA, CI SONO 3 UCCELLINI APPENA NATI. QUANTE ZAMPE POTRESTI CONTARE IN TUTTO?



POTREI CONTARE ..... ZAMPE!

- DA DIETRO LO STECCATO FANNO CAPOLINO UN GATTINO, UN CONIGLIETTO E UN'OCCHETTA. TOH, ECCO ANCHE UN SERPENTELLO! QUANTE ZAMPETTE SI NASCONDONO DIETRO LO STECCATO?



DIETRO LO STECCATO SI NASCONDONO ..... ZAMPETTE.



SPIEGA A VOCE LE TUE RISPOSTE.

## PRIME ADDIZIONI: IL SEGNO "PIU'" (+)

 LEGGI, OSSERVA E COMPLETA.

- CI SONO 2 CASSETTE. DISEGNA QUELLE CHE SERVONO PER ARRIVARE A 5.



LE CASSETTE ERANO , NE HO AGGIUNTE . ORA SONO .

**SCRIVO L'OPERAZIONE** → ..... + ..... = .....

**RISPONDO:** .....

- CI SONO 3 CUORI. DISEGNA QUELLI CHE SERVONO PER ARRIVARE A 7.



I CUORI ERANO , NE HO AGGIUNTI . ORA SONO .

**SCRIVO L'OPERAZIONE** → ..... + ..... = .....

**RISPONDO:** .....

- CI SONO  STELLE. DISEGNA QUELLE CHE SERVONO PER ARRIVARE A 10.



LE STELLE ERANO , NE HO AGGIUNTE . ORA SONO .

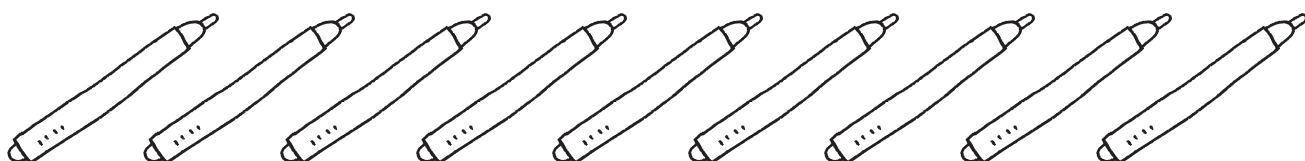
**SCRIVO L'OPERAZIONE** → ..... + ..... = .....

**RISPONDO:** .....

## PRIME SOTTRAZIONI: IL SEGNO "MENO" (-)

 LEGGI, OSSERVA E COMPLETA.

- CI SONO 9 PENNARELLI, 4 NON SCRIVONO PIÙ. BUTTALI VIA CANCELLANDOLI CON UNA X.



I PENNARELLI ERANO , NE HO BUTTATI . ORA SONO .

**SCRIVO L'OPERAZIONE** → ..... - ..... = .....

**RISPONDO:** .....

- CI SONO  MELE. I BAMBINI NE MANGIANO 5.

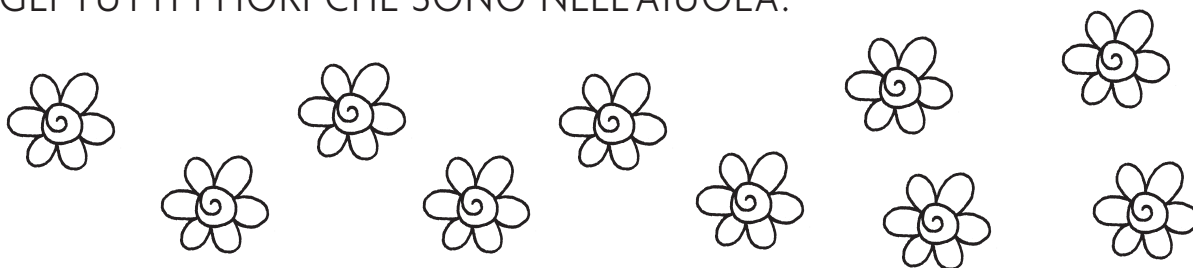


LE MELE ERANO , NE SONO STATE MANGIATE . NE SONO RIMASTE .

**SCRIVO L'OPERAZIONE** → ..... - ..... = .....

**RISPONDO:** .....

- COGLI TUTTI I FIORI CHE SONO NELL'AIUOLA.



I FIORI ERANO , NE HO COLTI . NELL'AIUOLA NE RESTANO .

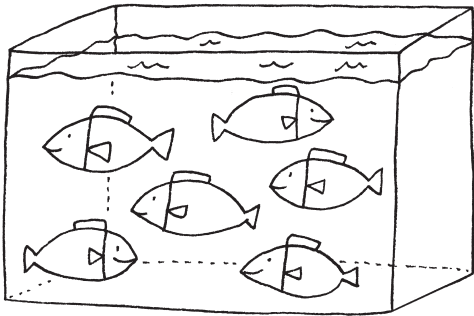
**SCRIVO L'OPERAZIONE** → ..... - ..... = .....

**RISPONDO:** .....

## ADDIZIONE O SOTTRAZIONE?



LEGGI I TESTI DEI PROBLEMI E INDICA CON UNA **X** SE SI RISOLVONO CON UN'ADDIZIONE O CON UNA SOTTRAZIONE. PUOI AIUTARTI ANCHE CON I DISEGNI.



- NELL'ACQUARIO CI SONO 4 PESCI ROSSI E 2 PESCI BLU.

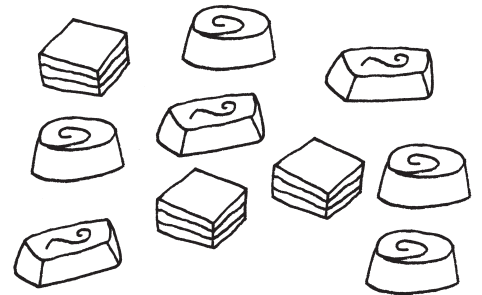
**QUANTI SONO I PESCI NELL'ACQUARIO?**

ADDIZIONE (+)  SOTTRAZIONE (-)

- NELLA SCATOLA C'ERANO 10 CIOCCOLATINI. ALESSIO NE HA MANGIATI 3.

**QUANTI CIOCCOLATINI SONO RIMASTI?**

ADDIZIONE (+)  SOTTRAZIONE (-)



- SUL RAMO CI SONO 5 UCCELLINI. UN TUONO FORTISSIMO LI SPAVENTA E VOLANO VIA TUTTI.

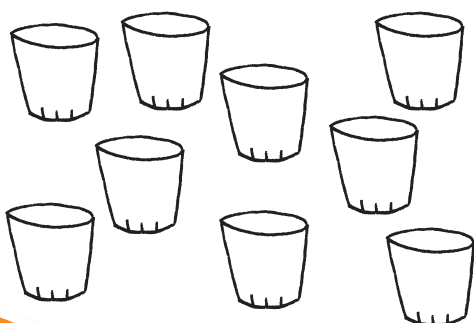
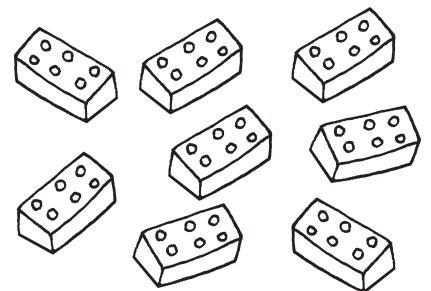
**QUANTI UCCELLINI RESTANO SUL RAMO?**

ADDIZIONE (+)  SOTTRAZIONE (-)

- LORENZO VUOLE COSTRUIRE UNA TORRE CON 3 MATTONCINI ROSSI, 1 BLU E 4 GIALLI.

**QUANTI MATTONCINI UTILIZZA?**

ADDIZIONE (+)  SOTTRAZIONE (-)



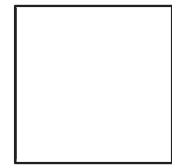
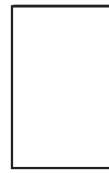
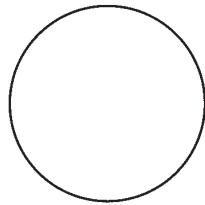
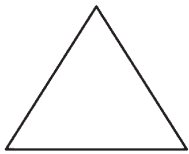
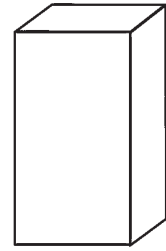
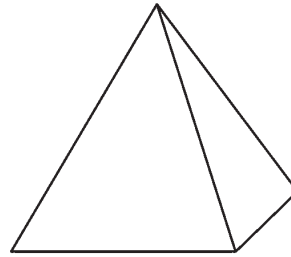
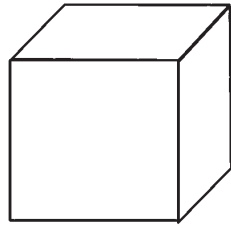
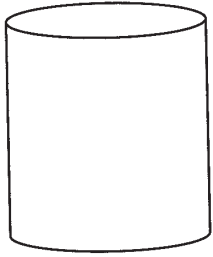
- SUL TAVOLO CI SONO 9 BICCHIERI. 2 SONO VUOTI, GLI ALTRI SONO PIENI DI ARANCIATA.

**QUANTI SONO I BICCHIERI PIENI?**

ADDIZIONE (+)  SOTTRAZIONE (-)

## LA PAROLA GIUSTA

 **COLORA ALLO STESSO MODO CIASCUNA FIGURA SOLIDA E LA SUA IMPRONTA.**



TRIANGOLO

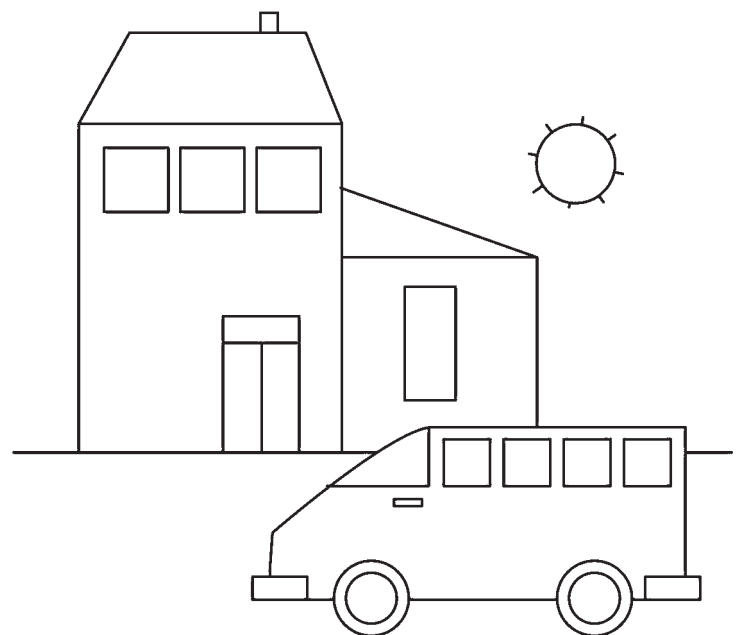
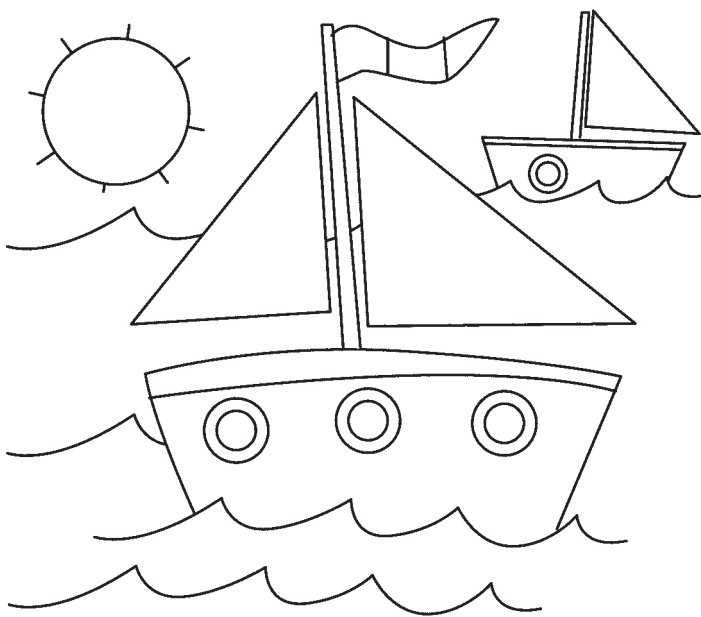
CERCHIO

RETTANGOLO

QUADRATO

 **COLORA DI GIALLO I CERCHI E DI BLU I TRIANGOLI.**

 **COLORA DI ROSSO I QUADRATI E DI VERDE I RETTANGOLI.**



## I QUADRI



AMY HA STACCATO I QUADRI DALLA PARETE PER SPOLVERARLI, MA ORA NON RICORDA PIÙ DOVE ERANO APPESI. OSSERVA IL SEGNO CHE HANNO LASCIATO E SCRIVI SOTTO A OGNI QUADRO LA LETTERA CORRISPONDENTE ALLA SUA IMPRONTA.

